



March 16, 2015

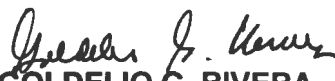
MEMORANDUM

TO : ALL ELECTRIC COOPERATIVES

**SUBJECT : COMPLIANCE REPORT ON THE PERFORMANCE OF ELECTRIC
COOPERATIVES FOR THE FOURTH QUARTER OF 2014**

May we furnish you an initial report on the financial and operational performance of the electric cooperatives (ECs) for the fourth quarter of 2014. Kindly go over the report pertaining to your respective ECs and email your comments thereon to mabitazanvickie@yahoo.com, if there are any, not later than March 24, 2015.

Thank you.


GOLDELIO G. RIVERA
Director, OPASS

COMPLIANCE REPORT ON THE PERFORMANCE OF ELECTRIC COOPERATIVES

For the Fourth Quarter of 2014

I. RATIONALE

Sections 19 of the Implementing Rules and Regulations (IRR) of RA 10531 provides that to carry out its expanded mandate and to ensure that the ECs are financially viable and able to meet the operational and financial standards and take preventive measures, the NEA shall have the obligations, among other things, to develop standards and protocols for the efficient operations of the ECs, to develop financial and operational parameters to serve as triggers for the intervention of the NEA in the EC operations at least one (1) year prior to being categorized as ailing EC, to evaluate and categorize ECs based on standards set with due consideration to ailing ECs, to enforce performance standards and submit quarterly compliance report to the DOE and JCPC which shall include summary of compliance to key performance standards and recommendation for rehabilitation or takeover in case of ailing ECs.

In compliance therewith, the NEA formulated the Guidelines for the Classification Electric Cooperatives and Provision for NEA Intervention which was approved by the Department of Energy on December 12, 2013. The said guidelines are used for the classification of the ECs and for the assessment of the performance of the ECs.

II. PERFORMANCE STANDARDS AND PARAMETERS

Based on the six (6) financial and operational standards and parameters under the Guidelines for the Classification of ECs and Provision for NEA Intervention and Guidelines for NEA Intervention and Various Options for Ailing ECs and the six (6) circumstances mentioned in Section 20 of the IRR, the ECs are classified into Green, Yellow-1, Yellow-2 and Red or Ailing ECs. Green ECs complied with all the six (6) standards and parameters. Yellow-1 ECs did not comply with not more than three (3) standards and parameters. Yellow-2 ECs did not comply with four (4) or more standards and parameters and ECs which fall under the six (6) circumstances mentioned in Section 20 of the IRR but have not been declared as ailing ECs.

However, ECs falling under any of the circumstances mentioned in Section 20 of the IRR may not be automatically considered as ailing ECs. As part of due process, the Guidelines for the Classification of ECs and Provision for NEA Intervention and the Guidelines for NEA Intervention and Various Options for Ailing ECs provide that any EC which falls under any of the circumstances mentioned in Section 20 of the IRR, may be afforded a recovery period of not more than one (1) year to undertake remedial and mitigating measures including a doable Operation Improvement Plan (OIP) to be submitted to the NEA for approval. If within a certain period, not exceeding one hundred eighty (180) days from the implementation of the OIP, there is no concrete and substantial improvement in the financial condition of the EC, the OIP shall be set aside and become wholly inoperative and the EC shall be declared as ailing EC.

III. COVERAGE OF THE COMPLIANCE REPORT

The Compliance Report for the fourth quarter ending December 31, 2014 includes the following:

1. Rationale;
2. Performance standards and parameters;
3. Brief summary;
4. Classification of ECs based on financial and operational standards and parameters formulated by the NEA and approved by the Department of Energy and Section 20 of the IRR;
5. Summary of compliances to financial and operational standards and parameters;
6. Summary of compliances to technical standards and parameters;
7. Summary of compliances to institutional standards and parameters; and
8. Status, actions taken and recommendations for Ailing ECs.

IV. BRIEF SUMMARY

The assessment of the ECs' performance is intended to measure their compliance to certain established financial, operational, technical and institutional standards and parameters and to determine their proper classification/status so that appropriate preventive, remedial and/or mitigating actions will be instituted and suitable assistance and interventions will be provided.

Compliance to Financial and Operational Standards

There is a notable improvement in the financial and operational performance of the ECs for the fourth quarter. There are forty seven (47) Green ECs or 39% for the fourth quarter compared to thirty eight (38) ECs or 31% for the third quarter; twenty nine (29) ECs or 24% for the second quarter and thirty (30) ECs or 25% for the first quarter. The financial and operational performance of fourteen (14) Yellow-1 ECs had significantly improved for the fourth quarter of 2014 while the performance of five (5) Green ECs retrogressed.

There are fifty (50) Yellow-1 ECs or 41% for the fourth quarter compared to fifty four (54) ECs or 45% for the third quarter; sixty (60) Yellow-1 ECs or 50% for the second quarter and forty eight (48) ECs or 40% for the first quarter.

The ninety seven (97) Green ECs and Yellow-1 ECs constitute 80% of the one hundred twenty one (121) ECs including NEECO II-Area 2 and COTELCO-PPALMA.

There are thirteen (13) Yellow-2 ECs or 11% for the fourth quarter compared to eighteen (18) ECs or 15% for the third quarter; twenty one (21) ECs or 17% for the second quarter and thirty six (36) ECs or 30% for the first quarter. There are seven (7) Yellow-2 ECs which have been upgraded to Yellow-1 ECs while there are two (2) Yellow-1 ECs which have been downgraded to Yellow-2 ECs. There are indications and manifestations that the Yellow-2 ECs are experiencing financial and operational difficulties. The causes of the liquidity problems of certain ECs include accumulated debts, low collection efficiency, high system loss and governance issues. To address their liquidity problems and operational weaknesses, the NEA is providing financial, institutional and technical assistance.

Compliance to Technical Standards

Based on the assessment of the technical standards and parameters, there is an improvement of the system loss on the national level from 12.16% for the third quarter to 11.83% in the fourth quarter. The system loss level of eleven (11) regions improved while the system loss of five (5) regions retrogressed. By and large, the system loss level of the ECs in Luzon, Visayas and Mindanao had improved for the fourth quarter. The national average system loss for 2014 is 11.67%.

As surveyed, the improvement on system loss is attributable to the following programs undertaken by the ECs, to wit:

- Replacement of defective and malfunctioning meters
- Pole meter clustering
- Vegetation management or right of way clearing
- Line upgrading, line conversion and line rehabilitation
- Transformer load management which involves load centering of distribution transformers
- Uprating of overloaded distribution transformers

Although there is a decrease in system loss for the fourth quarter, the ECs are confronted with the following problems:

- Pilferage
- Defective meters
- Right of way problem
- Overloaded system
- Low voltage problem, either on the 69kv side or at the consumer side
- Erratic billing cycles
- Delayed implementation of Capex project due to delayed approval by ERC
- Tapping points of the distribution system are inadequate to accommodate new lines

System Average Interruption Frequency Index (SAIFI)

There is a great improvement in the compliances to SAIFI for the fourth quarter compared to the third quarter. For the fourth quarter, eighty four (84) ECs or 70% are within standard while twenty one (21) ECs or 17% are below standard. Sixteen (16) ECs or 13% have not submitted any data.

For the third quarter, thirty eight (38) ECs or 31% are within standard, sixty five (65) ECs or 54% are below standard and eighteen (18) ECs or 15% have not submitted any data.

For the second quarter, thirty four (34) ECs or 28% are within standard, seventy nine (79) ECs or 66% are below standard and seven (7) ECs or 6% have not submitted any data.

For the first quarter, eighty six (86) ECs or 72% are within standard, six (6) ECs or 5% are below standard and twenty eight (28) ECs or 23% have not submitted any data.

System Average Interruption Duration Index (SAIDI)

There is a significant improvement in the compliances to SAIDI for the fourth quarter compared to the third quarter. For the fourth quarter, one hundred (100) ECs or 83% are within standard while five (5) ECs or 4% are below standard. Sixteen (16) ECs or 13% have not submitted any data.

For the third quarter, fifty five (55) ECs or 45% are within standard, forty eight (48) ECs or 40% are below standard while eighteen (18) ECs or 15% have not submitted any data.

For the second quarter, only thirty nine (39) ECs or 32% are within standard, seventy four (74) ECs or 62% are below standard and seven (7) ECs or 6% have not submitted any data.

For the first quarter, eighty three (83) ECs or 69% are within standard, nine (9) ECs or 8% are below standard and 28 ECs or 23% have not submitted any data.

Compliance to Institutional Standards

There appears to be earnest efforts exerted by the ECs to comply with governance and institutional standards. The efforts of the ECs arise from increased awareness to the governance and institutional standards and parameters and clearer understanding of the duties and responsibilities of the EC Board of Directors and management through various consultations, competency seminars and training programs conducted by the NEA for the EC personnel.

The number of compliant ECs stands at ninety one (91) ECs or 75% for the fourth quarter as compared to eighty (80) or 66% for the third quarter; seventy six (76) or 63% for the second quarter and twenty nine (29) or 24% for the first quarter.

The number of partially compliant ECs stands at thirteen (13) ECs or 11% for the fourth quarter as compared to twenty one (21) or 17% for the third quarter; twenty one (21) or 17% for the second quarter and thirty eight (38) or 31% for the first quarter.

The number of non-compliant ECs stands at seventeen (17) ECs or 14% for the fourth quarter as compared to twenty (20) or 17% for the third quarter; twenty four (24) or 20% for the second quarter and eight (8) or 7% for the first quarter.

Status and actions taken for Ailing ECs

The NEA has provided assistance and guidance to ailing ECs. Under the close supervision of the NEA, ALECO is under a twenty five (25) year concession agreement and the concessionaire is taking steps to revitalize its operations and resuscitate its financial condition.

PELCO II is under a twenty (20) year Investment Management Contract (IMC) with COMSTECH, Inc. and Manila Electric Company. In accordance with the terms of the IMC, the Investor-Manager settled PELCO II's debts with NEA and its power supplier. With the infusion of funds by the Investor-Manager, the financial condition of PELCO II has dramatically improved. It posted a positive net worth of Php241.8 million as of December 31, 2014 from a negative net worth of Php730 million as of December 31, 2013. It also registered a net income of Php222 million for the twelve (12) month period ending December 31, 2014.

The NEA, through the concerned departments, is closely monitoring the operation and financial condition of PELCO III, CASURECO III, MASELCO and NORSAMELCO and various options may be taken for them if their overall performance does not improve.

The financial condition of TISELCO is improving by posting a net income of Php11.9 million and positive net worth of Php40.4 million. With a favorable cash general fund, it has to update its accounts payable with its power supplier.

A uniform approach should be taken for the ailing ECs in the Autonomous Region in Muslim Mindanao (ARMM) such as TAWELCO, BASELCO, SULECO, LASURECO and MAGELCO. The various options for ailing ECs under RA 10531 such a PSP may not be appropriate given the enormity and magnitude of their financial difficulties. The settlement of their indebtedness may involve a legislated debt relief under the aegis of the Bangsamoro Basic Law.

V. COMPLIANCES TO PERFORMANCE STANDARDS AND PARAMETERS

A. Compliance to Financial and operational standards and parameters

1. EC Classification

The overall performance of the ECs has significantly improved during the fourth quarter. Fourteen (14) Yellow-1 ECs for the third quarter have been classified as Green ECs for the fourth quarter while six (6) Green ECs for the third quarter have been downgraded as Yellow-1 ECs for the fourth quarter. There are forty seven (47) Green ECs (including PALECO which is CDA registered) or 39% for the fourth quarter compared to thirty eight (38) Green ECs or 31% for the third quarter; twenty nine (29) ECs or 24% for the second quarter and thirty (30) ECs or 25% for the first quarter. The financial and operational performance of fourteen (14) Yellow-1 ECs had significantly improved for the fourth quarter of 2014 while the performance of five (5) Green ECs retrogressed.

There are fifty (50) Yellow-1 ECs or 41% for the fourth quarter compared to fifty four (54) ECs or 45% for the third quarter; sixty (60) ECs or 50% for the second quarter and forty three (43) ECs or 40% in the first quarter.

The ninety seven (97) Green and Yellow-1 ECs constitute 80% of the one hundred twenty one (121) ECs.

For the fourth quarter, the performances of seven (7) Yellow-2 ECs improved and have been classified as Yellow-1 ECs while the performance of two (2) Yellow-1 ECs retrogressed and have been classified as Yellow-2 ECs.

There are thirteen (13) Yellow-2 ECs or 11% for the fourth quarter compared to eighteen (18) ECs or 15% for the third quarter; twenty one (21) ECs or 17% for the second quarter and thirty six (36) ECs or 30% for the first quarter. The operation and financial performance of the Yellow-2 ECs are being closely monitored and appropriate means of intervention are being carried out to address their inefficiencies and liquidity problems.

There are eleven (11) Red or ailing ECs constituting 9% of the one hundred twenty one (121).

The matrix on the classification of the ECs for the first, second, third and fourth quarters of 2014 are, as follows:

EC Classification	4 th Quarter		3 rd Quarter		2 nd Quarter		1 st Quarter	
	No.	%	No.	%	No.	%	No.	%
Green	47	39	38	31	29	24	30	25
Yellow-1	50	41	54	45	60	50	43	36
Yellow-2	13	11	18	15	21	17	36	30
Red	11	9	11	9	11	9	11	9
Total	121	100%	121	100%	121*	100%	120	100%

- Including NEECO II - Area 2 and COTELCO-PPALMA

List of Green ECs

Electric Cooperative		4th Quarter	3rd Quarter	2nd Quarter	1st Quarter
1	ISECO				
2	TARELCO I				
3	TARELCO II				
4	NEECO II - Area 1				
5	PRESCO				
6	PELCO I				
7	PENELCO				
8	ORMECO				
9	PALECO				
10	ILECO I				
11	CEBECO I				
12	CEBECO II				
13	CEBECO III				
14	ZAMSURECO I				
15	DASURECO				
16	COTELCO				
17	SIARELCO				
18	DIELCO				
19	SURSECO I				
20	CAGELCO I				
21	ANTECO				
22	ILECO II				
23	BOHECO I				
24	SOLECO				

List of Green ECs

Electric Cooperative		4th Quarter	3rd Quarter	2nd Quarter	1st Quarter
25	CAMELCO	Green	Yellow	Green	Green
26	BOHECO II	Green	Green	Green	Orange
27	CAGELCO II	Green	Green	Yellow	Yellow
28	BENECO	Green	Green	Yellow	Yellow
29	MOPRECO	Green	Yellow	Yellow	Green
30	NEECO II - Area 2	Green	Green	Yellow	Yellow
31	BATELEC I	Green	Green	Yellow	Yellow
32	MORESCO I	Green	Green	Yellow	Yellow
33	BUSECO	Green	Green	Yellow	Yellow
34	ASELCO	Green	Green	Yellow	Yellow
35	SOCOTECO II	Green	Green	Yellow	Orange
36	INEC	Green	Yellow	Yellow	Yellow
37	LUELCO	Green	Yellow	Yellow	Yellow
38	AURELCO	Green	Yellow	Yellow	Yellow
39	NONECO	Green	Yellow	Yellow	Yellow
40	NORECO I	Green	Yellow	Yellow	Yellow
41	LEYECO IV	Green	Yellow	Yellow	Yellow
42	MOELCI II	Green	Yellow	Yellow	Yellow
43	SOCOTECO I	Green	Yellow	Yellow	Yellow
44	SURNECO	Green	Yellow	Yellow	Yellow
45	QUEZELCO II	Green	Yellow	Yellow	Orange
46	PROSIELCO	Green	Yellow	Yellow	Orange
47	ILECO III	Green	Yellow	Orange	Orange

List of Yellow-1 ECs

Electric Cooperative		4th Quarter	3rd Quarter	2nd Quarter	1st Quarter
1	NEECO I				
2	DORECO				
3	SAJELCO				
4	LUBELCO				
5	PANELCO I				
6	BATANELCO				
7	ZAMECO II				
8	CELCO				
9	MORESCO II				
10	FIBECO				
11	ANECO				
12	ISELCO II				
13	IFELCO				
14	ZAMECO I				
15	FLECO				
16	MARELCO				
17	TIELCO				
18	ROMELCO				
19	CANORECO				
20	FICELCO				
21	AKELCO				
22	NOCECO				
23	NORECO II				
24	BANELCO				
25	BILECO				

List of Yellow-1 ECs

Electric Cooperative		4th Quarter	3rd Quarter	2nd Quarter	1st Quarter
26	SAMELCO II				
27	MOELCI I				
28	SUKELCO				
29	PANELCO III				
30	ISELCO I				
31	QUIRELCO				
32	BATELEC II				
33	QUEZELCO I				
34	OMECO				
35	SORECO I				
36	CASURECO I				
37	ZANECO				
38	LANECO				
39	COTELCO-PPALMA				
40	SURSECO II				
41	KAELCO				
42	CASURECO II				
43	CASURECO IV				
44	CAPELCO				
45	LEYECO II				
46	LEYECO III				
47	SIASELCO				
48	PELCO II				
49	BISELCO				
50	LEYECO V				

List of Yellow-2 ECs

Electric Cooperative		4th Quarter	3rd Quarter	2nd Quarter	1st Quarter
1	GUIMELCO				
2	ESAMELCO				
3	CENPELCO				
4	NUVELCO				
5	ABRECO				
6	SORECO II				
7	CENECO				
8	DORELCO				
9	SAMELCO I				
10	ZAMSURECO II				
11	ZAMCELCO				
12	DANECO				
13	CASELCO				

List of Red or Ailing ECs

Electric Cooperative		4th Quarter	3rd Quarter	2nd Quarter	1st Quarter
1	PELCO III				
2	ALECO				
3	CASURECO III				
4	MASELCO				
5	TISELCO				
6	NORSAMELCO				
7	TAWELCO				
8	BASELCO				
9	SULECO				
10	LASURECO				
11	MAGELCO				

The comparative lists of the Green ECs or ECs which complied with all the six (6) financial and operational standards and parameters for the first, second, third and fourth quarters of 2014 are, as follows:

Fourth Quarter	Third Quarter	Second Quarter	First Quarter
1. INEC*	1. ISECO	1. ISECO	1. ISECO
2. ISECO	2. CAGELCO I	2. TARELCO I	2. PANELCO I
3. LUELCO*	3. CAGELCO II	3. TARELCO II	3. BATANELCO
4. CAGELCO I	4. BENECO	4. NEECO I	4. CAGELCO I
5. CAGELCO II	5. TARELCO I	5. NEECO II - Area 1	5. MOPRECO
6. BENECO	6. TARELCO II	6. PRESCO	6. TARELCO I
7. MOPRECO*	7. NEECO I**	7. PELCO I	7. TARELCO II
8. AURELCO*	8. NEECO II - Area 1	8. PENELCO	8. NEECO I
9. TARELCO I	9. NEECO II - Area 2	9. SAJELCO	9. NEECO II - A1
10. TARELCO II	10. PRESCO	10. LUBELCO	10. PRESCO
11. NEECO II - Area 1	11. PELCO I	11. ORMECO	11. PELCO I
12. NEECO II - Area 2	12. PENELCO	12. PALECO	12. PENELCO
13. PRESCO	13. BATELEC I	13. ANTECO	13. SAJELCO
14. PELCO I	14. LUBELCO**	14. ILECO I	14. ZAMECO II
15. PENELCO	15. ORMECO	15. ILECO II	15. ORMECO
16. BATELEC I	16. PALECO	16. CEBECO I	16. PALECO
17. QUEZELCO II*	17. ANTECO	17. CEBECO II	17. ILECO I
18. ORMECO	18. ILECO I	18. CEBECO III	18. CEBECO I
19. ANTECO	19. ILECO II	19. BOHECO I	19. CEBECO II
20. ILECO I	20. CEBECO I	20. BOHECO II	20. CEBECO III
21. ILECO II	21. CEBECO II	21. SOLECO	21. CELCO
22. ILECO III*	22. CEBECO III	22. ZAMSURECO I	22. ZAMSURECO I
23. NONECO*	23. BOHECO I	23. CAMELCO	23. CAMELCO
24. CEBECO I	24. BOHECO II	24. DORECO	24. DORECO
25. CEBECO II	25. SOLECO	25. DASURECO	25. DASURECO
26. CEBECO III	26. ZAMSURECO I	26. COTELCO	26. COTELCO
27. BOHECO I	27. MORESCO I	27. SIARELCO	27. ANECO
28. BOHECO II	28. MORESCO II**	28. DIELCO	28. SIARELCO
29. NORECO I*	29. FIBECO**	29. SURSECO I	29. DIELCO
30. PROSIELCO*	30. BUSECO		30. SURSECO I
31. LEYECO IV*	31. DORECO**		

- | | |
|------------------|-----------------|
| 32. SOLECO | 32. DASURECO |
| 33. ZAMSURECO I | 33. COTELCO |
| 34. CAMELCO* | 34. SOCOTECO II |
| 35. MORESCO I | 35. ASELCO |
| 36. MOELCI II* | 36. SIARELCO |
| 37. BUSECO | 37. DIELCO |
| 38. DASURECO | 38. SURSECO I |
| 39. COTELCO | |
| 40. SOCOTECO I* | |
| 41. SOCOTECO II | |
| 42. ASELCO | |
| 43. SIARELCO | |
| 44. DIELCO | |
| 45. SURSECO I | |
| 46. SURNECO* | |
| 47. PALECO (CDA) | |

*Yellow-1 ECs upgraded to Green ECs

**Green ECs downgraded to Yellow-1 ECs

The fourteen (14) Yellow-1 ECs for the third quarter which have been classified as Green ECs for the fourth quarter are, as follows:

- | | |
|----------------|----------------|
| 1. INEC | 8. NORECO I |
| 2. LUELCO | 9. PROSIELCO |
| 3. MOPRECO | 10. LEYECO IV |
| 4. AURELCO | 11. CAMELCO |
| 5. QUEZELCO II | 12. MOELCI II |
| 6. ILECO III | 13. SOCOTECO I |
| 7. NONECO | 14. SURNECO |

The five (5) Green ECs for the third quarter which have been downgraded as Yellow-1 ECs for the fourth quarter are, as follows:

1. NEECO I
2. LUBELCO
3. MORESCO II
4. FIBECO
5. DORECO

The seven (7) Yellow-2 ECs for the third quarter which have been classified as Yellow-1 ECs for the fourth quarter are, as follows:

1. KAELCO
2. PELCO II
3. BISELCO
4. CASURECO II
5. CAPELCO
6. LEYECO V
7. SIASELCO

The two (2) Yellow-1 ECs for the third quarter which have been downgraded as Yellow-2 ECs for the fourth quarter are, as follows:

1. GUIMELCO
2. ESAMELCO

The Yellow-1 ECs for the fourth quarter of 2014 are, as follows:

YELLOW 1 ELECTRIC COOPERATIVE		INDICATORS								
		Cash Gen Fund	Coll. Eff.	GENCO	NGCP	Profitability	Networth 2014	Networth 2013	Networth 2012	System Loss
	REGION II									
1	BATANELCO	x	x	✓	*	✓	✓	✓	✓	✓
2	ISELCO I	x	x	✓	✓	✓	✓	✓	✓	x
	CAR									
3	IFELCO	✓	x	✓	✓	✓	✓	✓	✓	x
4	KAELCO	✓	✓	x	✓	✓	✓	✓	✓	x
	REGION III									
5	NEECO I	✓	x	✓	✓	✓	✓	✓	✓	✓
6	ZAMECO I	✓	x	✓	✓	✓	✓	✓	✓	✓
7	ZAMECO II	✓	x	✓	✓	✓	✓	✓	✓	✓
	REGION IV-A									
8	BATELEC II	x	✓	✓	✓	✓	✓	✓	✓	✓
9	FLECO	x	x	x	✓	✓	✓	✓	✓	✓
10	QUEZELCO I	x	x	✓	✓	✓	✓	✓	✓	x
	REGION IV-B									
11	BISELCO	x	x	x	*	✓	✓	✓	✓	✓
12	LUBELCO	✓	✓	✓	*	x	✓	✓	✓	✓
13	MARELCO	x	✓	✓	*	✓	✓	✓	✓	✓
14	OMECO	x	✓	✓	*	✓	x	x	x	x
15	TIELCO	x	✓	✓	*	✓	✓	✓	✓	✓
16	ROMELCO	x	x	✓	*	✓	✓	✓	✓	✓

* Off-Grid Electric Cooperatives

YELLOW 1 ELECTRIC COOPERATIVE		INDICATORS								
		Cash Gen Fund	Coll. Eff.	GENCO	NGCP	Profitability	Networth 2014	Networth 2013	Networth 2012	System Loss
	REGION V									
17	CASURECO I	✓	✓	✓	✓	✓	✓	✓	✓	x
18	CASURECO II	x	x	✓	✓	✓	✓	✓	✓	x
19	CANORECO	x	x	✓	✓	✓	✓	✓	✓	✓
20	FICELCO	x	✓	✓	*	x	✓	✓	✓	x
21	SORECO I	✓	x	x	x	✓	✓	✓	✓	✓
22	CASURECO IV	✓	x	✓	✓	✓	✓	✓	✓	✓
	REGION VI									
23	AKELCO	x	✓	✓	✓	✓	✓	✓	✓	✓
24	CAPELCO	x	x	x	✓	✓	✓	✓	✓	✓
	REGION VII									
25	CELCO	x	✓	✓	*	✓	✓	✓	✓	✓
26	BANELCO	x	✓	✓	*	✓	✓	✓	✓	✓
	REGION VIII									
27	LEYECO II	✓	x	x	✓	✓	✓	✓	✓	✓
28	LEYECO III	x	x	✓	✓	✓	✓	x	✓	✓
29	LEYECO V	✓	x	✓	✓	x	✓	✓	✓	✓
30	BILECO	✓	✓	✓	✓	✓	✓	✓	✓	x
31	SAMELCO II	✓	x	✓	✓	✓	✓	✓	✓	✓

* Off-Grid Electric Cooperatives

YELLOW 1 ELECTRIC COOPERATIVE		INDICATORS								
		Cash Gen Fund	Coll. Eff.	GENCO	NGCP	Profitability	Networth 2014	Networth 2013	Networth 2012	System Loss
	REGION IX									
32	ZANECO	x	x	✓	✓	✓	✓	✓	✓	✓
	REGION X									
33	MORESCO II	x	✓	✓	✓	✓	✓	✓	✓	✓
34	FIBECO	x	✓	✓	✓	✓	✓	✓	✓	✓
35	LANECO	x	✓	✓	✓	✓	✓	✓	✓	x
36	MOELCI I	x	x	x	✓	✓	✓	✓	✓	✓
	REGION XI									
37	DORECO	x	x	✓	✓	✓	✓	✓	✓	✓
	REGION XII									
38	SUKELCO	✓	✓	✓	✓	✓	✓	✓	✓	x
39	COTELCO-PPALMA	x	✓	NS	NS	✓	✓	✓	✓	x
	CARAGA									
40	ANECO	x	✓	✓	✓	✓	✓	✓	✓	✓
41	SURSECO II	x	✓	✓	✓	✓	✓	✓	✓	✓
	ARMM									
42	SIASELCO	x	x	x	*	✓	✓	✓	✓	✓

* Off-Grid Electric Cooperative

The Yellow-2 ECs for the fourth quarter of 2014 are, as follows:

YELLOW 2 ELECTRIC COOPERATIVE		INDICATORS								
		Cash Gen Fund	Coll. Eff.	GENCO	NGCP	Profitability	Networth 2014	Networth 2013	Networth 2012	System Loss
	REGION I									
1	CENPELCO	x	x	x	✓	✓	✓	✓	✓	x
	REGION VI									
2	GUIMELCO	x	x	x	✓	✓	✓	✓	✓	x
3	CENECO	x	x	x	✓	x	✓	✓	✓	x
	REGION VIII									
4	ESAMELCO	NS	NS	x	✓	NS	NS	✓	✓	x
5	DORELCO	NS	NS	x	x	NS	NS	✓	✓	x
6	SAMELCO I	x	x	x	x	✓	✓	✓	✓	x
	REGION IX									
7	ZAMSURECO II	x	x	x	✓	x	✓	✓	✓	x
8	ZAMCELCO	x	x	✓	✓	x	✓	✓	✓	x
	REGION XI									
9	DANECO	x	x	x	x	✓	✓	✓	✓	x
	ARMM									
10	CASELCO	NS	NS	x	*	NS	NS	✓	✓	NS

* Off-Grid Electric Cooperative

The Red or ailing ECs for the fourth quarter of 2014 are, as follows:

AILING ELECTRIC COOPERATIVE		INDICATORS								
		Cash Gen Fund	Coll. Eff.	GENCO	NGCP	Profitability	Networth 2014	Networth 2013	Networth 2012	System Loss
1	PELCO III	x	x	x	✓	x	x	x	x	x
2	CASURECO III	x	x	x	x	✓	x	x	x	x
3	MASELCO	x	x	x	*	x	✓	✓	✓	x
4	TISELCO	✓	x	x	*	✓	✓	✓	✓	x
5	NORSAMELCO	x	x	x	✓	✓	x	x	x	x
6	TAWELCO	✓	x	x	*	x	x	x	x	x
7	BASELCO	x	x	x	*	x	x	x	x	x
8	SULECO	x	x	x	*	x	x	x	x	x
9	LASURECO	x	NS	x	✓	x	NS	x	x	x
10	MAGELCO	✓	x	x	✓	x	x	x	x	x

* Off-Grid Electric Cooperatives

CDA Registered Electric Cooperatives

GREEN ELECTRIC COOPERATIVE		INDICATORS								
		Cash Gen Fund	Coll. Eff.	GENCO	NGCP	Profitability	Networth 2014	Networth 2013	Networth 2012	System Loss
1	PALECO	✓	✓	✓	*	✓	✓	✓	✓	✓

* Off-Grid Electric Cooperative

YELLOW 1 ELECTRIC COOPERATIVE		INDICATORS								
		Cash Gen Fund	Coll. Eff.	GENCO	NGCP	Profitability	Networth 2014	Networth 2013	Networth 2012	System Loss
1	PANELCO I	✓	✓	✓	✓	✓	✓	✓	✓	x
2	PANELCO III	✓	x	✓	✓	✓	✓	✓	✓	x
3	QUIRELCO	x	x	✓	✓	✓	✓	✓	✓	x
4	ISELCO II	x	x	✓	✓	✓	✓	✓	✓	x
5	SAJELCO	✓	x	✓	✓	✓	✓	✓	✓	✓
6	NOCECO	✓	✓	x	✓	✓	✓	✓	✓	✓
7	NORECO II	✓	x	✓	✓	✓	✓	✓	✓	x
YELLOW 2 ELECTRIC COOPERATIVE		INDICATORS								
		Cash Gen Fund	Coll. Eff.	GENCO	NGCP	Profitability	Networth 2014	Networth 2013	Networth 2012	System Loss
1	NUVELCO	NS	NS	✓	✓	NS	NS	✓	✓	x
2	ABRECO	x	x	x	x	x	x	NS	NS	x
3	SORECO II	x	x	x	✓	✓	✓	✓	✓	x

Electric Cooperatives under Private Sector Participation (PSP)

YELLOW 1 ELECTRIC COOPERATIVE		INDICATORS								
		Cash Gen Fund	Coll. Eff.	GENCO	NGCP	Profitability	Networth 2014	Networth 2013	Networth 2012	System Loss
1	PELCO II	x	x	✓	✓	✓	✓	x	x	✓
AILING ELECTRIC COOPERATIVE		INDICATORS								
		Cash Gen Fund	Coll. Eff.	GENCO	NGCP	Profitability	Networth 2014	Networth 2013	Networth 2012	System Loss
1	ALECO	NS	x	x	x	NS	NS	x	x	NS

The comparative tables and pies showing the EC classification are, as follows:

4th Quarter

Classification	No. of ECs	Percentage
Green	47	39%
Yellow-1	50	41%
Yellow-2	13	11%
Red	11	9%
Total	121	100%

3rd Quarter

Classification	No. of ECs	Percentage
Green	38	31%
Yellow-1	54	45%
Yellow-2	18	15%
Red	11	9%
Total	121	100%

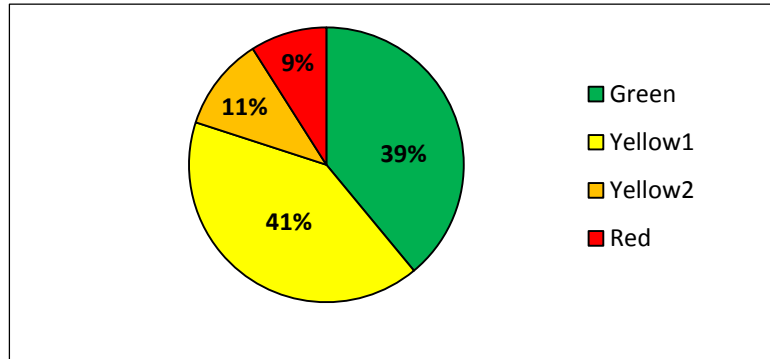
2nd Quarter

Classification	No. of ECs	Percentage
Green	29	24%
Yellow-1	60	50%
Yellow-2	21	17%
Red	11	9%
Total	121	100%

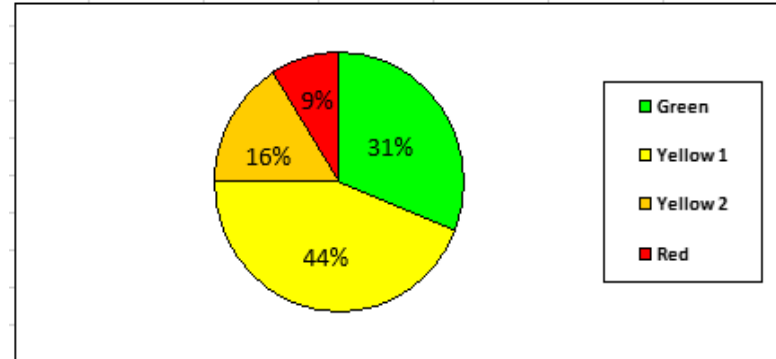
1st Quarter

Classification	No. of ECs	Percentage
Green	30	25%
Yellow-1	43	36%
Yellow-2	36	30%
Red	11	9%
Total	120	100%

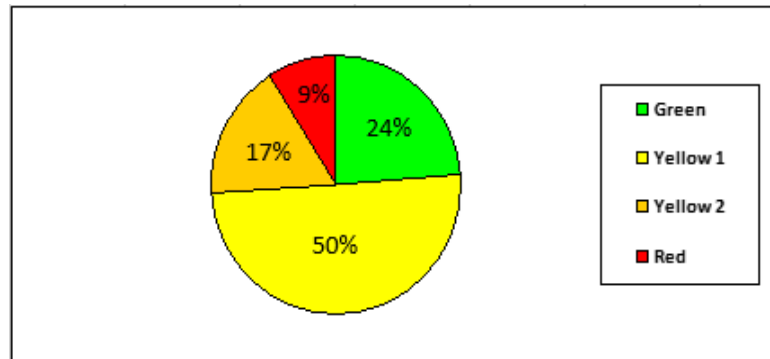
4th Quarter



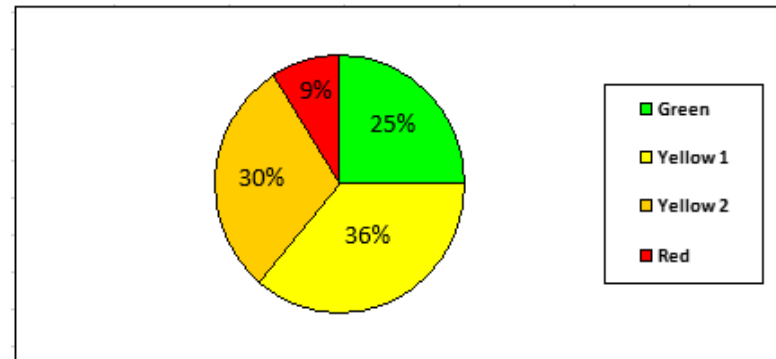
3rd Quarter



2nd Quarter



1st Quarter



2. Cash General Fund

For the fourth quarter of 2014, there are sixty nine (69) ECs or 57% which complied with the one (1) month working capital requirement while forty seven (47) ECs or 39% did not comply with the one (1) month working capital requirement. Five (5) EC 4% have not submitted any data.

For the third quarter, sixty four (64) ECs or 53% complied with the one (1) month working capital requirement while forty six (46) ECs or 38% failed to meet the one (1) month working capital requirement. Eleven (11) ECs or 9% have not submitted any data.

For the second quarter, sixty (60) ECs or 50% complied with the one (1) month working capital requirement while fifty eight (58) ECs or 48% did not comply with the one (1) month working capital requirement. Three (3) ECs or 2% have not submitted any data.

For the first quarter, fifty six (56) ECs or 47% which complied with the one (1) month working capital requirement while forty nine (49) ECs or 41% failed to meet the one (1) month working capital requirement. Fifteen (15) ECs have not submitted any data.

The favorable liquidity position of the sixty eight (68) ECs was attributed to high collection efficiency, low system loss and incremental income from non-core business.

The negative liquidity position of forty eight (48) ECs was attributed to low collection efficiency, high system loss and the fact that the one (1) month working capital and the prudential requirements do not form part of the existing tariff for ECs under the "Rules for Setting the Electric Cooperatives" Wheeling Rates (RSEC-WR).

The comparative tables and graphs showing the performance of the ECs on the Cash General Fund for the first, second, third and fourth quarters of 2014 are, as follows:

4th Quarter

Classification	No. of ECs			Total
	One Month Requirements	Less than One Month Requirement	No Data	
Green	47	0	0	47
Yellow-1	19	31	0	50
Yellow-2	0	9	4	13
Red	3	7	1	11
Total	69	47	5	121
Percentage	57%	39%	4%	100%

3rd Quarter

Classification	No. of ECs			Total
	One Month Requirements	Less than One Month Requirement	No Data	
Green	37	0	0	37
Yellow-1	20	34	0	54
Yellow-2	1	8	10	19
Red	6	4	1	11
Total	64	46	11	121
Percentage	53%	38%	9%	100%

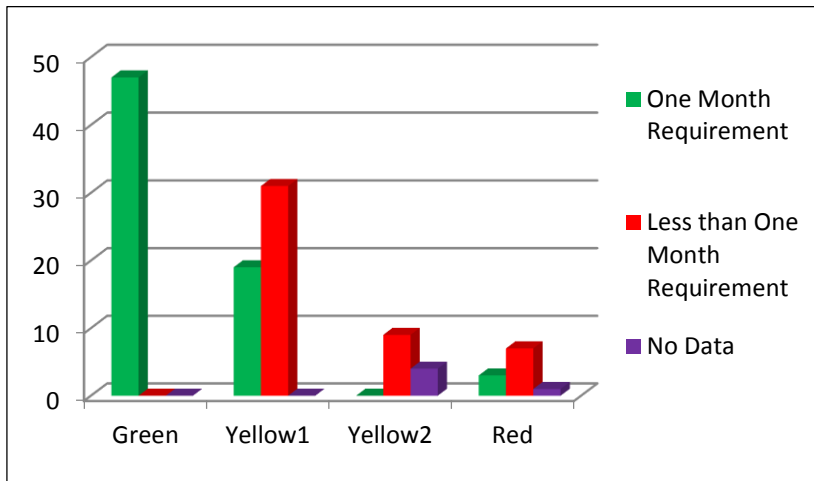
2nd Quarter

Classification	No. of ECs			Total
	One Month Requirements	Less than One Month Requirement	No Data	
Green	29	0	0	29
Yellow-1	26	34	0	60
Yellow-2	4	15	2	21
Red	1	9	1	11
Total	60	58	3	121
Percentage	50%	48%	2%	100%

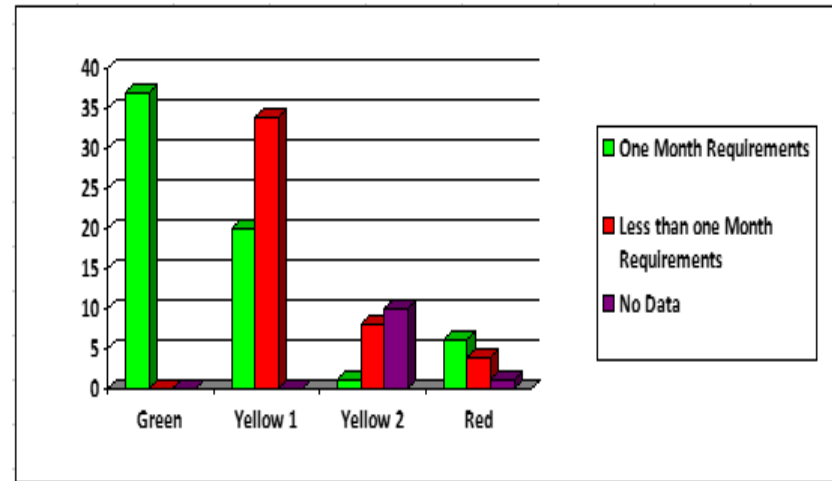
1st Quarter

Classification	No. of ECs			Total
	One Month Requirements	Less than One Month Requirement	No Data	
Green	30	0	0	30
Yellow-1	21	20	2	43
Yellow-2	4	22	10	36
Red	1	7	3	11
Total	56	49	15	120
Percentage	47%	41%	12%	100%

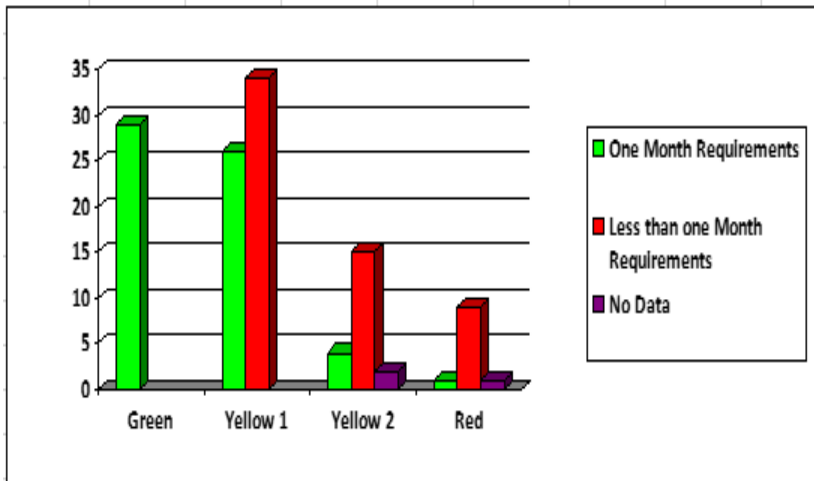
4th Quarter



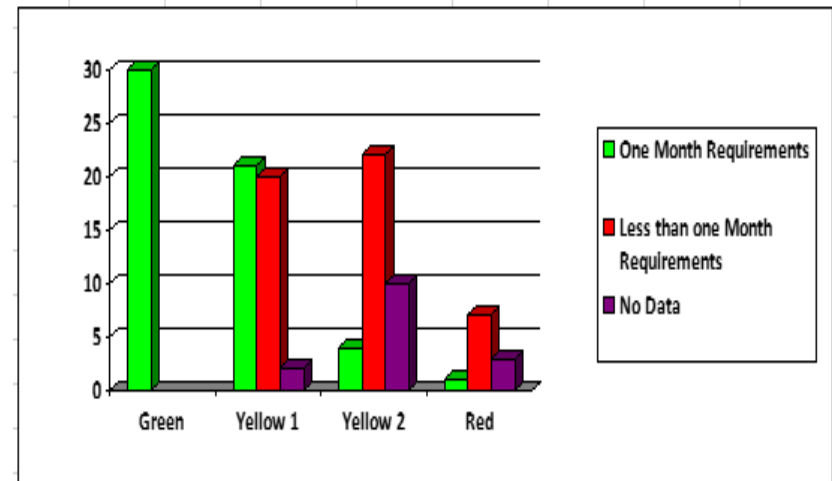
3rd Quarter



2nd Quarter



1st Quarter



3. Collection Efficiency

For the fourth quarter of 2014, there are sixty eight (68) ECs or 56% which registered collection efficiency of at least 95% while there are forty eight (48) ECs or 40% which registered a collection efficiency of below 95%. Five (5) ECs or 4% have not submitted any data.

For the third quarter, sixty eight (68) ECs or 56% registered collection efficiency of 95% and above while thirty seven (37) ECs or 31% which registered a collection efficiency of below 95%. Sixteen (16) ECs or 13% have not submitted any data.

For the second quarter, sixty nine (69) ECs or 57% registered a collection efficiency of 95% and above while forty six (46) ECs or 38% registered a collection efficiency of less than 95%. Six (6) ECs or 5% have not submitted any data.

For the first quarter, sixty five (65) ECs or 54% registered a collection efficiency of at least 95% while forty two (42) ECs or 35% registered a collection efficiency of less than 95%. Thirteen (13) ECs or 11% have not submitted any data.

The comparative tables and graphs showing the performance of the ECs on Collection Efficiency for the first, second, third and fourth quarters of 2014 are, as follows:

4th Quarter

Classification	No. of ECs			Total
	95% & above	below 95%	No Data	
Green	47	0	0	47
Yellow-1	21	29	0	50
Yellow-2	0	9	4	13
Red	0	10	1	11
Total	68	48	5	121
Percentage	56%	40%	4%	100%

3rd Quarter

Classification	No. of ECs			Total
	95% & above	below 95%	No Data	
Green	37	0	0	37
Yellow-1	28	22	4	54
Yellow-2	0	8	11	19
Red	3	7	1	11
Total	68	37	16	121
Percentage	56%	31%	13%	100%

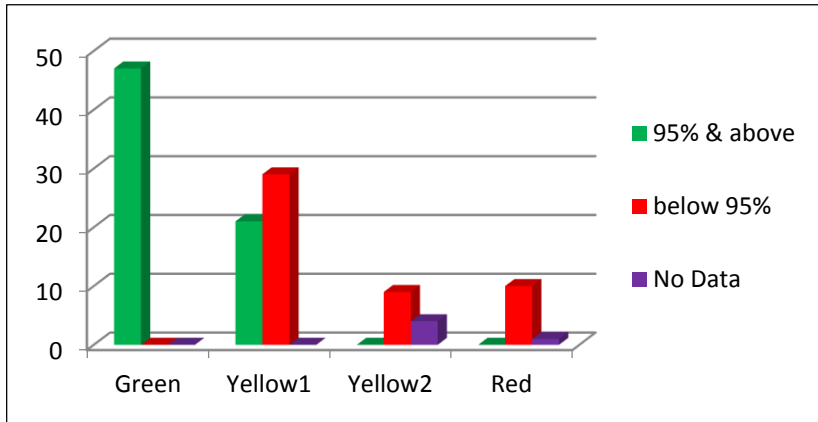
2nd Quarter

Classification	No. of ECs			Total
	95% & above	below 95%	No Data	
Green	29	0	0	29
Yellow-1	40	20	0	60
Yellow-2	0	16	5	21
Red	0	10	1	11
Total	69	46	6	121
Percentage	57%	38%	5%	100%

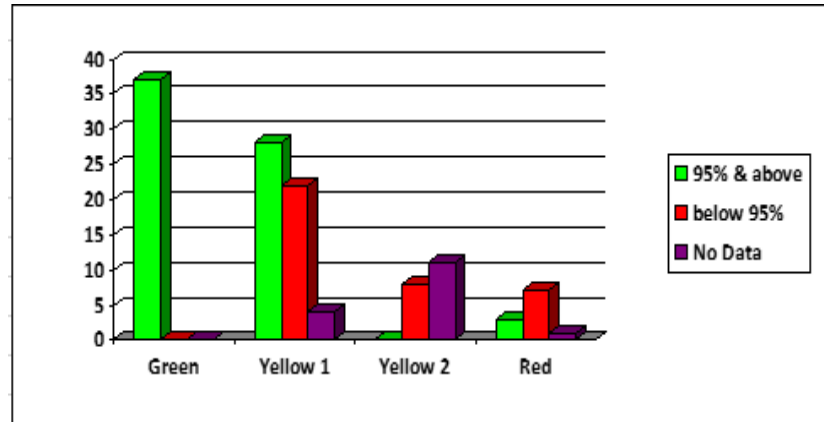
1st Quarter

Classification	No. of ECs			Total
	95% & above	below 95%	No Data	
Green	30	0	0	30
Yellow-1	27	16	0	43
Yellow-2	8	18	10	36
Red	0	8	3	11
Total	65	42	13	120
Percentage	54%	35%	11%	100%

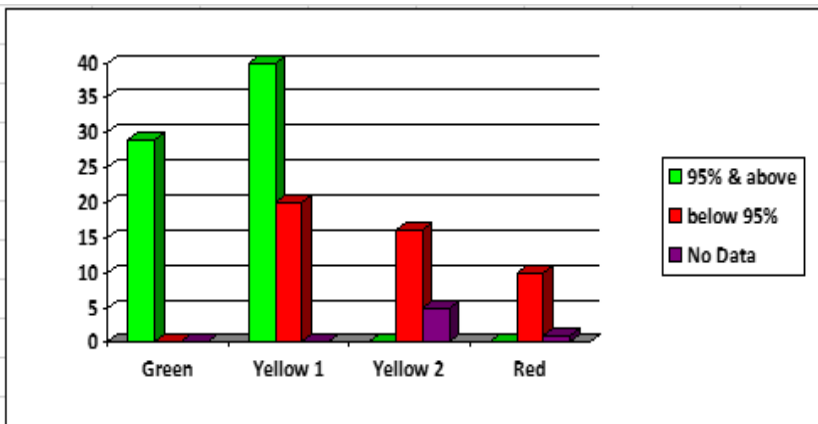
4th Quarter



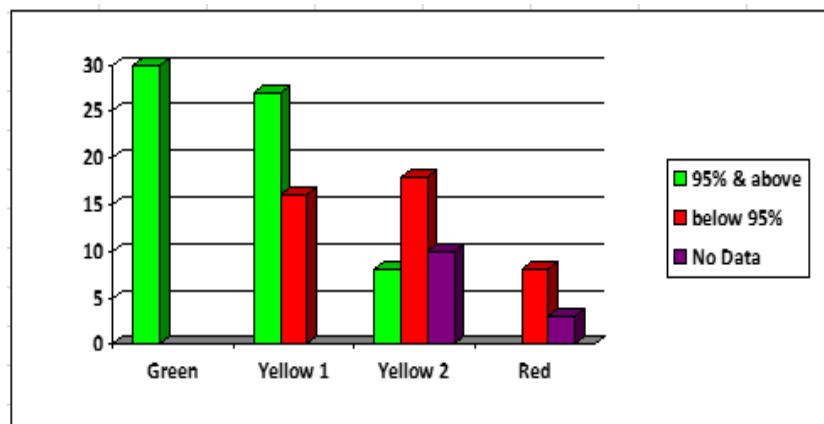
3rd Quarter



2nd Quarter



1st Quarter



4. Accounts Payable - Generation Companies / Power Suppliers

For the fourth quarter of 2014, seventy nine (79) ECs or 66% are current in their accounts payable to their power suppliers while ten (10) or 8% are current in their restructured accounts. Seventeen (17) ECs or 14% are with arrears in their accounts payable while fourteen (14) ECs or 12% are in arrears in their restructured accounts. COTELCO-PPALMA has not submitted data.

For the third quarter, seventy three (73) ECs or 60% are current in their accounts payable to their power suppliers while eight (8) ECs or 7% are current in their restructured accounts. Twenty one (21) ECs or 17% were in arrears in their accounts payable while nineteen (19) ECs or 16% were in arrears in their restructured accounts.

For the second quarter, sixty eight (68) ECs or 56% are current in their accounts payable to their power suppliers while seven (7) ECs or 6% are current in their restructured accounts. Twenty six (26) ECs or 21% are with arrears in their accounts payable while twenty (20) ECs of 17% are in arrears in their restructured accounts.

For the first quarter, seventy five (75) ECs or 62% are current in their accounts payable to their power suppliers while twelve (12) ECs or 10% were current in their restructured accounts. Fourteen (14) ECs or 12% were in arrears in their accounts payable while nineteen (19) ECs or 16% were in arrears in their restructured accounts.

The comparative tables and graphs showing the performance of the ECs on their accounts payable to their power suppliers for the first, second, third and fourth quarters of 2014 are, as follows:

4th Quarter

Classification	Current	Restructured Current	Arrears	Restructured Arrears	Total
Green	45	2	0	0	47
Yellow-1	33	7	6	3	49*
Yellow-2	1	1	4	7	13
Red	0	0	7	4	11
Total	79	10	17	14	120*
Percentage	66%	8%	14%	12%	100%

* No Data for COTELCO-PPALMA

2nd Quarter

Classification	Current	Restructured Current	Arrears	Restructured Arrears	Total
Green	28	1	0	0	29
Yellow-1	38	5	12	5	60
Yellow-2	2	1	7	11	21
Red	0	0	7	4	11
Total	68	7	26	20	121
Percentage	56%	6%	21%	17%	100%

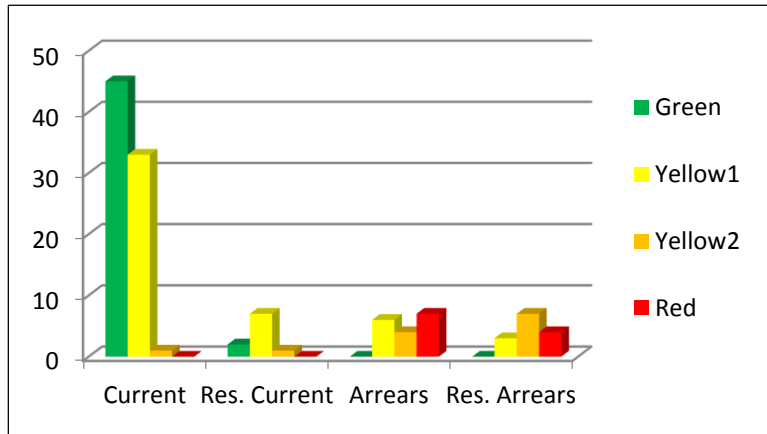
3rd Quarter

Classification	Current	Restructured Current	Arrears	Restructured Arrears	Total
Green	36	1	0	0	37
Yellow-1	35	6	8	5	54
Yellow-2	2	1	6	10	19
Red	0	0	7	4	11
Total	73	8	21	19	121
Percentage	60%	7%	17%	16%	100%

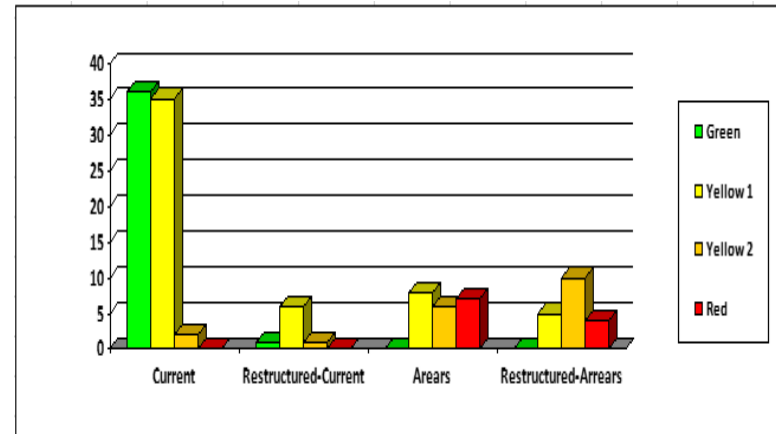
1st Quarter

Classification	Current	Restructured Current	Arrears	Restructured Arrears	Total
Green	27	3	0	0	30
Yellow-1	34	4	3	2	43
Yellow-2	14	5	5	12	36
Red	0	0	6	5	11
Total	75	12	14	19	120
Percentage	62%	10%	12%	16%	100%

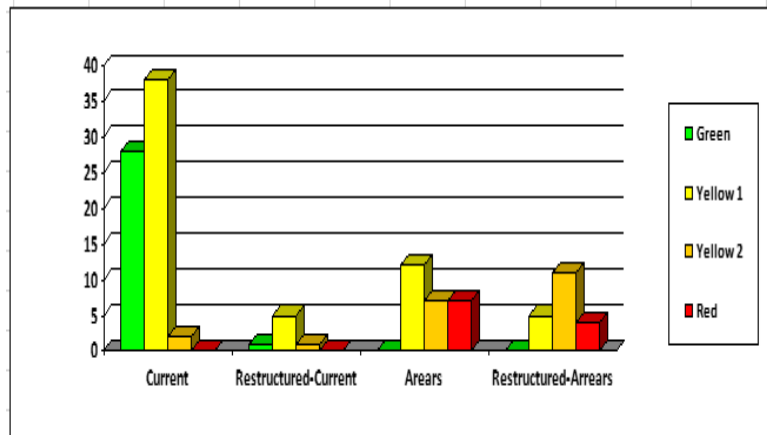
4th Quarter



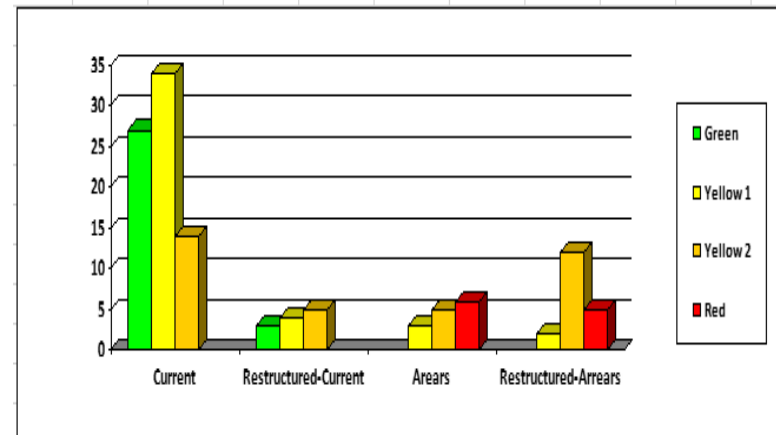
3rd Quarter



2nd Quarter



1st Quarter



5. Accounts Payable - National Grid Corporation of the Philippines (NGCP)

For the fourth quarter of 2014, eighty five (85) ECs or 85% are current in their accounts payable to NGCP while seven (7) ECs or 7% are current in their restructured accounts. Seven (7) ECs or 7% are with arrears in their accounts payable. Twenty one (21) ECs are off-grid. No data for COTELCO-PPALMA.

For the third quarter, eighty three (83) ECs or 69% are current in their accounts payable to NGCP while four (4) ECs or 3% are current in their restructured accounts. Twelve (12) ECs or 10% are with arrears while one (1) ECs or 1% are in arrears in their restructured accounts. Twenty one (21) ECs or 17% are off-grid.

For the second quarter, seventy eight (78) ECs or 64% are current in their accounts payable to NGCP while one (1) EC or 1% is current in its restructured account. Nineteen (19) ECs or 16% are in arrears in their accounts payable while three (3) or 2% are in arrears in their restructured accounts. Twenty (20) ECs or 17% are off-grid.

For the first quarter, ninety three (93) ECs or 78% are current in their accounts payable to NGCP while one (1) or 1% is current in its restructured account. Six (6) or 5% are in arrears in their accounts payable. Twenty (20) or 16% are off-grid.

The comparative tables and graphs showing the performance of the ECs on their accounts payable to the NGCP for the first, second, third and fourth quarters of 2014 are, as follows:

4th Quarter

Class	Current	Res. Current	Arrear	Res. Arrear	No Data	Total
Green	43	0	0	0	0	43
Yellow-1	34	3	1	0	1	39
Yellow-2	6	2	4	0	0	12
Red	2	2	2	0	0	6
Total	85	7	7	0	1	100*
%	85%	7%	7%	0%	1%	100%

Note: Twenty one (21) are Off-Grid ECs

2nd Quarter

Class	Current	Res. Current	Arrear	Res. Arrear	No Data	Total
Green	25	1	0	0	3	29
Yellow-1	42	0	7	1	10	60
Yellow-2	9	0	10	0	2	21
Red	2	0	2	2	5	11
Total	78	1	19	3	20	121
%	64%	1%	16%	2%	17%	100%

3rd Quarter

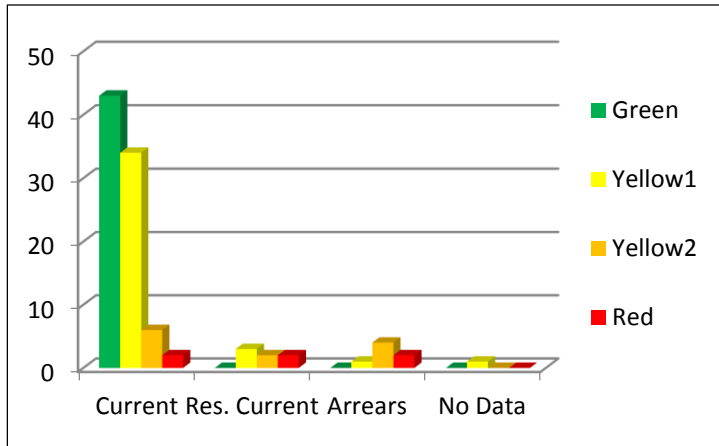
Class	Current	Res. Current	Arrear	Res. Arrear	No Data	Total
Green	32	1	0	0	4	37
Yellow-1	39	2	4	0	9	54
Yellow-2	10	1	5	0	3	19
Red	2	0	3	1	5	11
Total	83	4	12	1	21	121
%	69%	3%	10%	1%	17%	100%

Note: Twenty one (21) are Off-Grid ECs

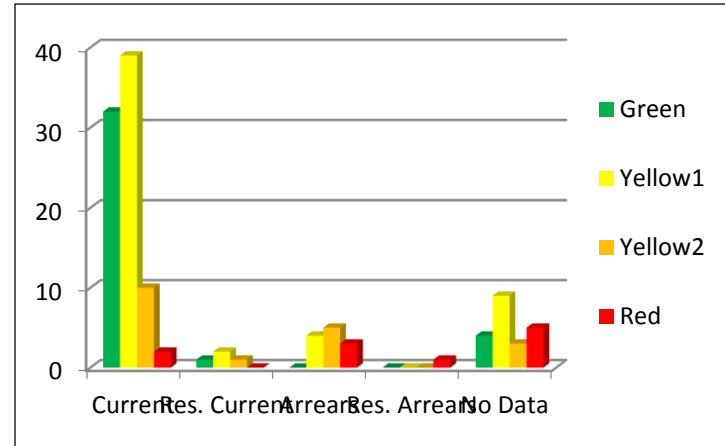
1st Quarter

Class	Current	Res. Current	Arrears	No Data	Total
Green	25	1	0	4	30
Yellow-1	37	0	0	6	43
Yellow-2	29	0	2	5	36
Red	2	0	4	5	11
Total	93	1	6	20	120
%	78%	1%	5%	16%	100%

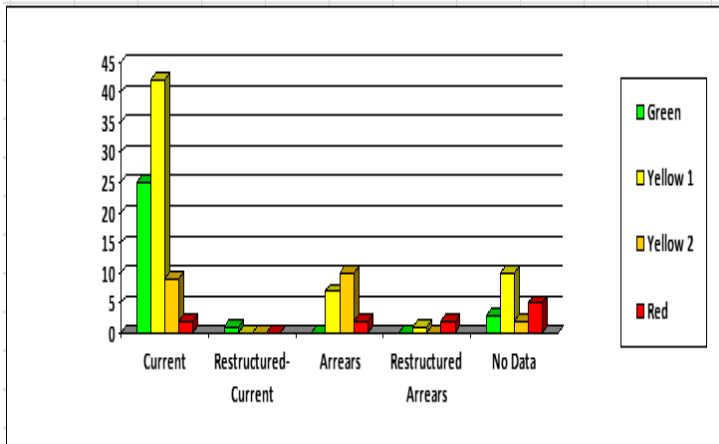
4th Quarter



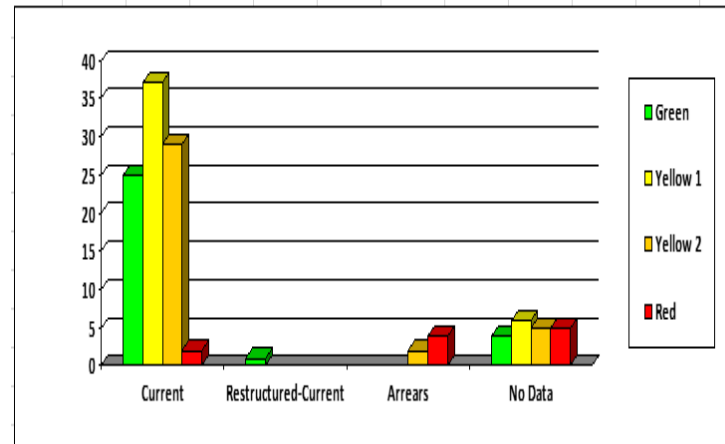
3rd Quarter



2nd Quarter



1st Quarter



6. Profitability

For the fourth quarter of 2014, four (4) additional ECs registered a net income. There are now one hundred two (102) ECs or 84% which registered a net income while fourteen (14) ECs or 12% registered a net loss. Five (5) ECs or 4% have not submitted any data.

For the third quarter, there are ninety eight (98) ECs or 81% which registered a net income while thirteen (13) ECs or 11% registered a net loss. Ten (10) ECs or 8% have not submitted any data.

For the second quarter, ninety three (93) ECs or 77% registered a net income while twenty five (25) ECs or 21% which registered a net loss. Three (3) ECs or 2% have not submitted any data.

For the first quarter, there are eighty two (82) ECs or 68% which registered a net income while thirty three (33) ECs or 28% registered a net loss. Five (5) ECs or 4% have not submitted any data.

The comparative tables and graphs showing the performance of the ECs on Profitability for the first, second, third and fourth quarters of 2014 are, as follows:

4th Quarter

Classification	No. of ECs			Total
	Net income	Net loss	No Data	
Green	47	0	0	47
Yellow-1	47	3	0	50
Yellow-2	5	4	4	13
Red	3	7	1	11
Total	102	14	5	121
Percentage	84%	12%	4%	100%

3rd Quarter

Classification	No. of ECs			Total
	Net income	Net loss	No Data	
Green	37	0	0	37
Yellow-1	51	3	0	54
Yellow-2	6	4	9	19
Red	4	6	1	11
Total	98	13	10	121
Percentage	81%	11%	8%	100%

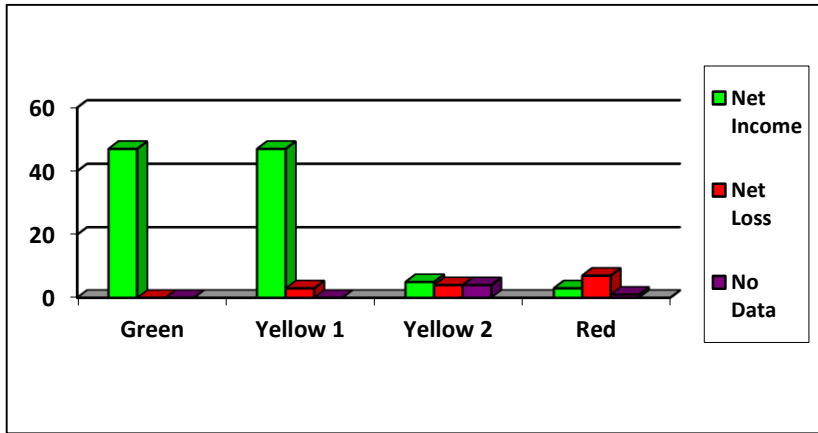
2nd Quarter

Classification	No. of ECs			Total
	Net income	Net loss	No Data	
Green	29	0	0	29
Yellow-1	50	10	0	60
Yellow-2	10	9	2	21
Red	4	6	1	11
Total	93	25	3	121
Percentage	77%	21%	2%	100%

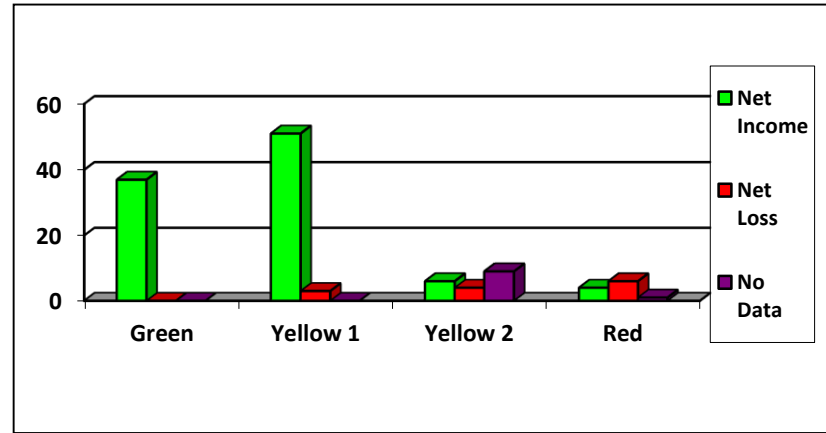
1st Quarter

Classification	No. of ECs			Total
	Net income	Net loss	No Data	
Green	30	0	0	30
Yellow-1	32	11	0	43
Yellow-2	15	17	4	36
Red	5	5	1	11
Total	82	33	5	120
Percentage	68%	28%	4%	100%

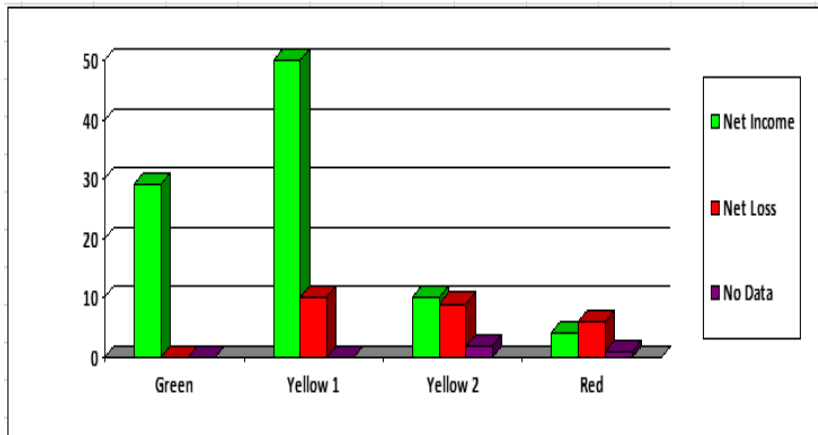
4th Quarter



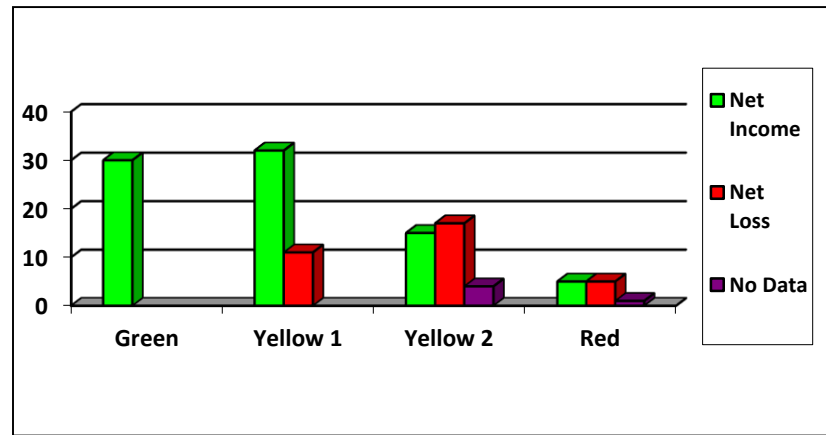
3rd Quarter



2nd Quarter



1st Quarter



7. Net Worth as of December 31, 2014

For the fourth quarter of 2014, six (6) additional ECs registered a positive net worth. There are now one hundred six (106) ECs or 88% that registered a positive net worth while nine (9) ECs or 7% registered a negative net worth. Six (6) ECs or 5% have not submitted any data.

For the third quarter, one hundred (100) ECs or 83% registered a positive net worth while nine (9) ECs or 7% registered a negative net worth. Twelve (12) ECs or 10% have not submitted any data.

For the second quarter, there are one hundred six (106) ECs or 88% registered a net worth while twelve (12) ECs or 10% registered a negative net worth. Three (3) ECs or 2% have not submitted any data.

For the first quarter, one hundred nine (109) ECs or 91% registered a positive net worth while there are eleven (11) ECs or 9% that registered a negative net worth.

The following seventeen (17) ECs registered a net worth of over Php1 billion, to wit:

Name of EC	Amount (in billions)	Name of EC	Amount (in billions)
1. BATELEC II	2.873	10. SOCOTECO II	1.065
2. BENEKO	1.895	11. ORMECO	1.056
3. CENECO	1.658	12. TARELCO I	1.048
4. PENELCO	1.638	13. ISECO	1.042
5. DANECO	1.304	14. SUKELCO	1.024
6. BATELEC I	1.267	15. DASURECO	1.014
7. PELCO I	1.184	16. NOCECO	1.013
8. COTELCO	1.158	17. TARELCO II	1.010
9. PANELCO III	1.106		

ECs which registered substantial negative net worth per quarter are, as follows:

Name of EC	4th Quarter (in millions)	3rd Quarter (in millions)	2nd Quarter (in millions)	1st Quarter (in millions)
1. ALECO	-	-	-	1,926
2. LASURECO	-	-	1,621	1,589
3. BASELCO	1,135	1,127	901	889
4. PELCO III	856	873	908	914
5. TAWELCO	617	595	559	536
6. SULECO	579	567	562	560
7. CASURECO III	473	475	356	323
8. MAGELCO	246	224	213	159
9. NORSAMELCO	165	129	130	121
10. ABRECO	133	104	110	-
11. OMECO	75	58	59	61

The comparative tables and graphs showing the net worth of the ECs for the first, second, third and fourth quarters of 2014 are, as follows:

4th Quarter

Classification	No. of ECs			Total
	Positive	Negative	No Data	
Green	47	0	0	47
Yellow-1	49	1	0	50
Yellow-2	8	1	4	13
Red	2	7	2	11
Total	106	9	6	121
Percentage	88%	7%	5%	100%

3rd Quarter

Classification	No. of ECs			Total
	Positive	Negative	No Data	
Green	37	0	0	37
Yellow-1	52	2	0	54
Yellow-2	9	0	10	19
Red	2	7	2	11
Total	100	9	12	121
Percentage	83%	7%	10%	100%

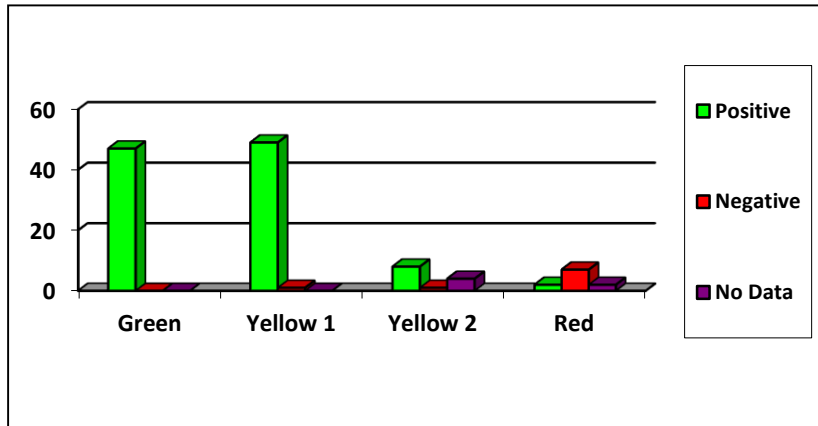
2nd Quarter

Classification	No. of ECs			Total
	Positive	Negative	No Data	
Green	29	0	0	29
Yellow-1	59	1	0	60
Yellow-2	16	3	2	21
Red	2	8	1	11
Total	106	12	3	121
Percentage	88%	10%	2%	100%

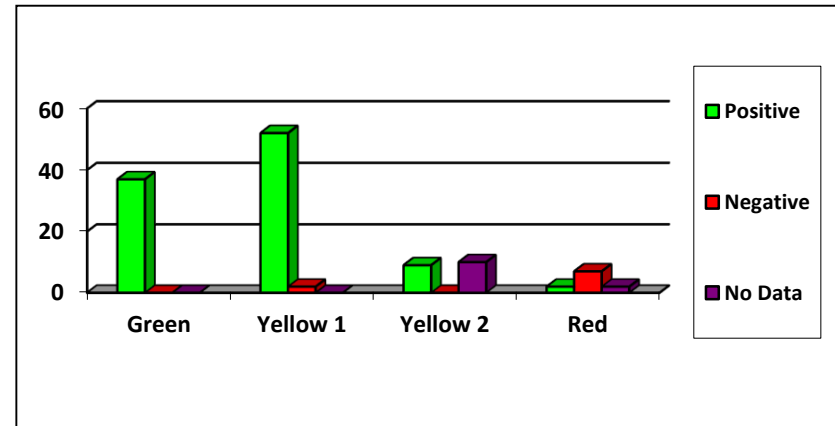
1st Quarter

Classification	No. of ECs		Total
	Positive	Negative	
Green	30	0	30
Yellow-1	43	0	43
Yellow-2	34	2	36
Red	2	9	11
Total	109	11	120
Percentage	91%	9%	100%

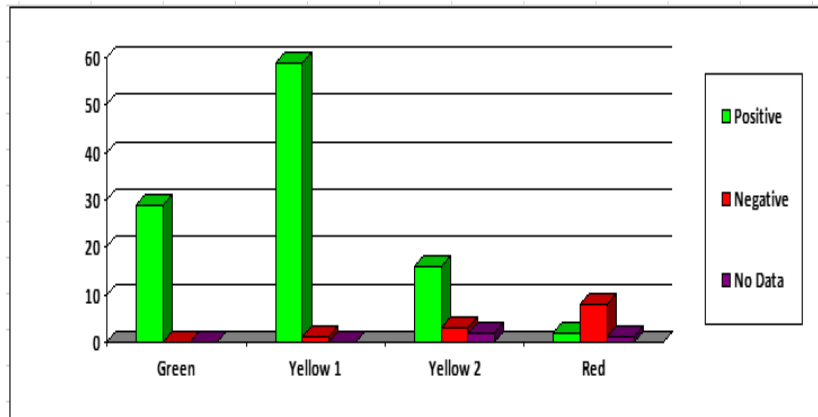
4th Quarter



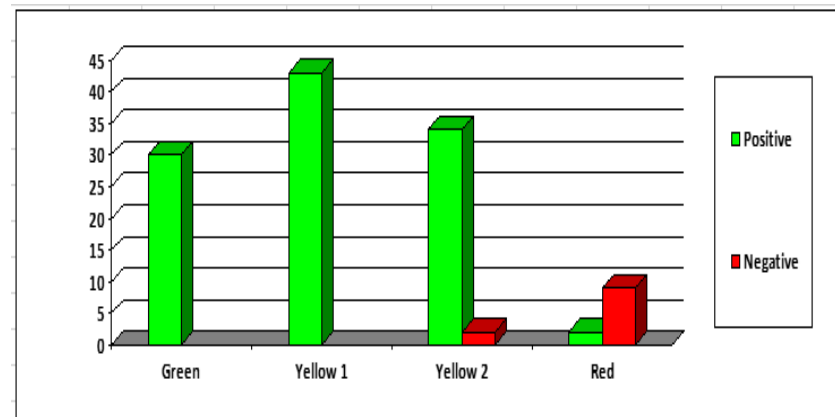
3rd Quarter



2nd Quarter



1st Quarter



B. Compliance to Technical Standards

1. System Loss

For the fourth quarter of 2014, seven (7) additional ECs registered a system loss within the cap. There are now eighty (80) ECs or 66% that registered system loss within the cap while thirty nine (39) ECs or 32% registered a system loss of 14% or higher. Two (2) ECs or 2% have not submitted any data.

For the third quarter, seventy three (73) ECs or 60% registered a system loss within the cap while forty four (44) ECs or 37% registered a system loss of 14% or higher. Four (4) ECs or 3% have not submitted any data.

For the second quarter, sixty three (63) ECs or 52% registered a system loss within the cap while fifty five (55) ECs or 46% registered a system loss of 14% or higher. Three (3) ECs or 2% have not submitted any data.

For the first quarter, sixty six (66) ECs or 55% registered a system loss within the cap while forty nine (49) ECs or 41% registered a system loss of 14% or higher. Five (5) ECs or 4% have not submitted any data.

The comparative graphs and tables showing the performance of the ECs on System Loss for the first, second, third and fourth quarters of 2014 are, as follows:

4th Quarter

Classification	No. of ECs			Total
	Within Cap	Above Cap	No Data	
Green	47	0	0	47
Yellow-1	33	17	0	50
Yellow-2	0	12	1	13
Red	0	10	1	11
Total	80	39	2	121
Percentage	66%	32%	2%	100%

3rd Quarter

Classification	No. of ECs			Total
	Within Cap	Above Cap	No Data	
Green	38	0	0	38
Yellow-1	33	20	1	54
Yellow-2	2	14	2	18
Red	0	10	1	11
Total	73	44	4	121
Percentage	60%	37%	3%	100%

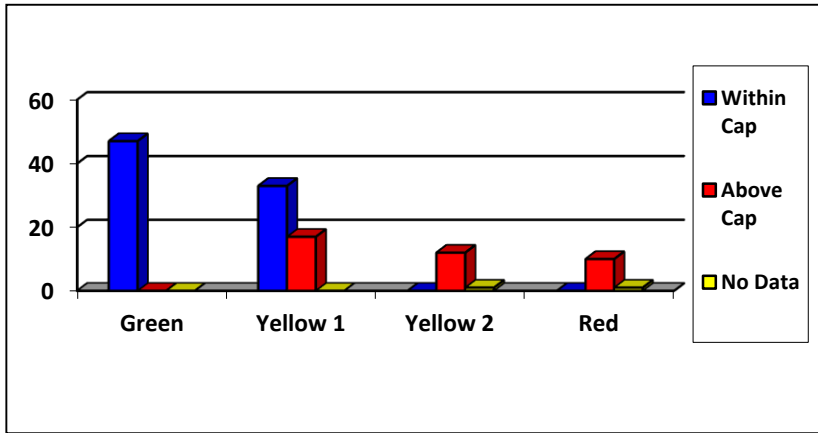
2nd Quarter

Classification	No. of ECs			Total
	Within Cap	Above Cap	No Data	
Green	29	0	0	29
Yellow-1	32	28	0	60
Yellow-2	2	17	2	21
Red	0	10	1	11
Total	63	55	3	121
Percentage	52%	46%	2%	100%

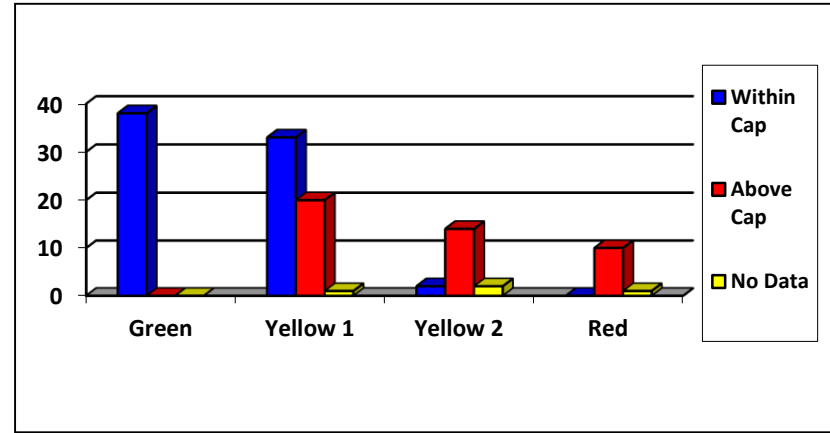
1st Quarter

Classification	No. of ECs			Total
	Within Cap	Above Cap	No Data	
Green	30	0	0	30
Yellow-1	28	15	0	43
Yellow-2	8	24	4	36
Red	0	10	1	11
Total	66	49	5	120
Percentage	55%	41%	4%	100%

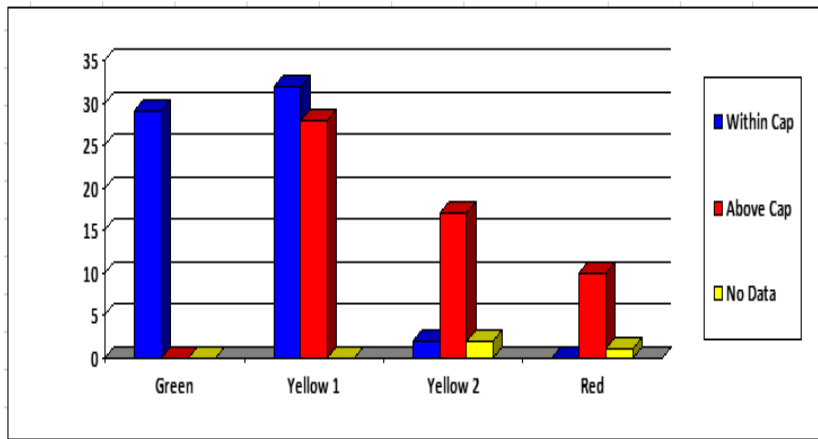
4th Quarter



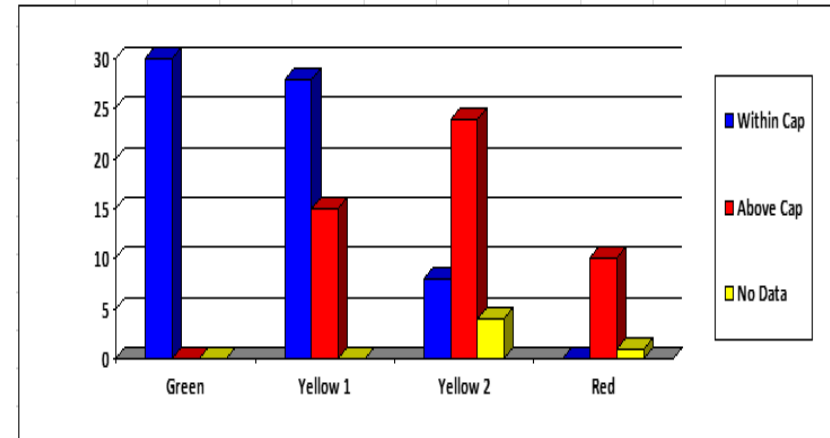
3rd Quarter



2nd Quarter



1st Quarter



Based on the assessment of the technical standards and parameters, there is an improvement of the system loss on the national level from 12.16% for the third quarter to 11.83% in the fourth quarter. The system loss level of eleven (11) regions improved while the system loss of five (5) regions retrogressed. By and large, the system loss level of the ECs in Luzon, Visayas and Mindanao had improved for the fourth quarter. The national average system loss for 2014 is 11.67%.

As surveyed, the improvement on system loss is attributable to the following programs undertaken by the ECs, to wit:

- Replacement of defective and malfunctioning meters
- Pole meter clustering
- Vegetation management or right of way clearing
- Line upgrading, line conversion and line rehabilitation
- Transformer load management which involves load centering of distribution transformers
- Uprating of overloaded distribution transformers

Although there is a decrease in system loss as compared to the third quarter, the ECs are confronted with the following problems:

- Pilferage
- Defective meters
- Right of way problem
- Overloaded system
- Low voltage problem, either on the 69kv side or at the consumer side
- Erratic billing cycles
- Delayed implementation of Capex project due to delayed approval by ERC
- Tapping points of the distribution system are inadequate to accommodate new lines

National System Loss Performance

	2010	2011	2012	2013	1 st Quarter 2014	2 nd Quarter 2014	3 rd Quarter 2014	4 th Quarter 2014	Variance	Remarks
Luzon	12.45	11.98	11.91	11.68	11.48	11.66	11.61	11.53	-0.08	improved
Visayas	11.47	11.19	11.10	11.38	12.08	12.27	12.01	11.46	-0.55	Improved
Mindanao	12.90	12.24	12.17	11.68	13.29	12.92	12.86	12.51	-0.35	improved
National	12.33	11.87	11.74	11.61	12.23	12.21	12.16	11.83	-0.33	improved



Single Digit



10 % - 13 %

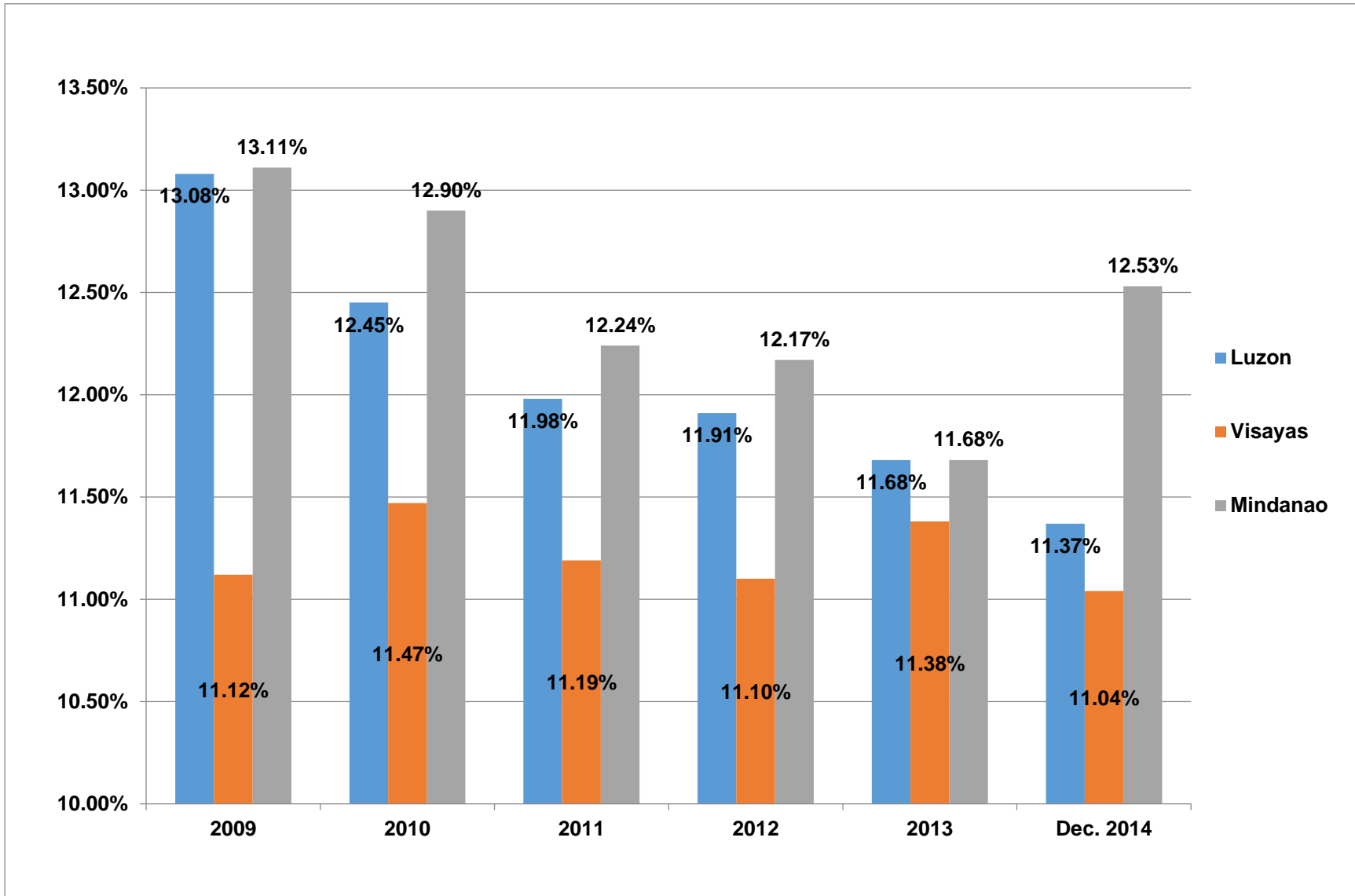


13 % to 20 %

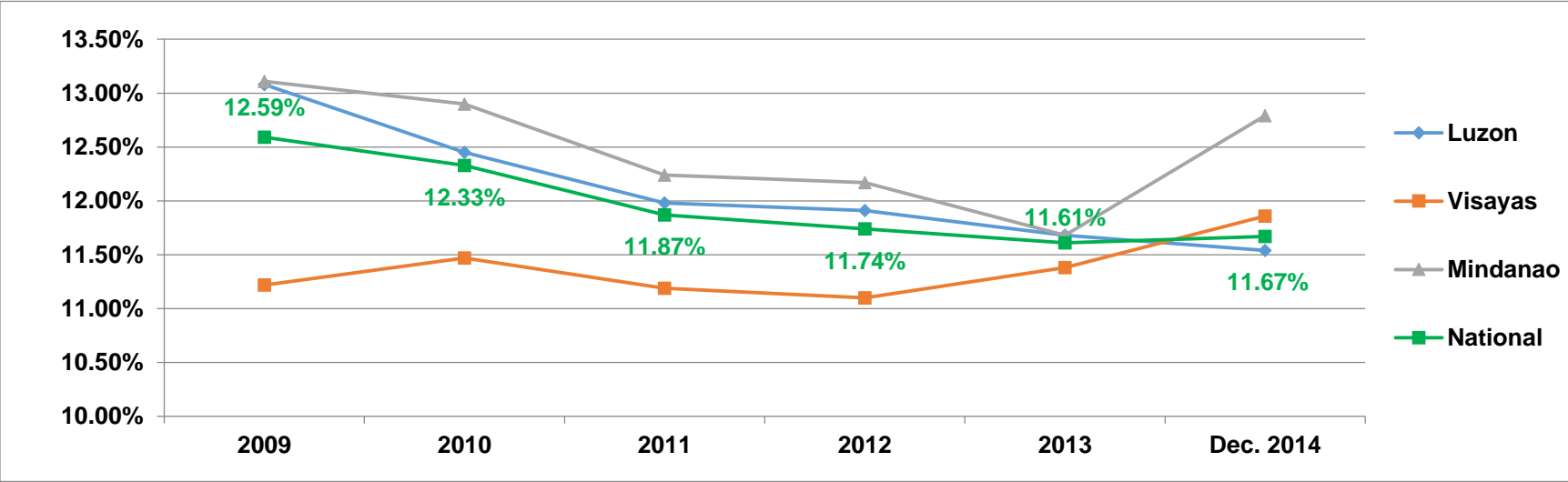
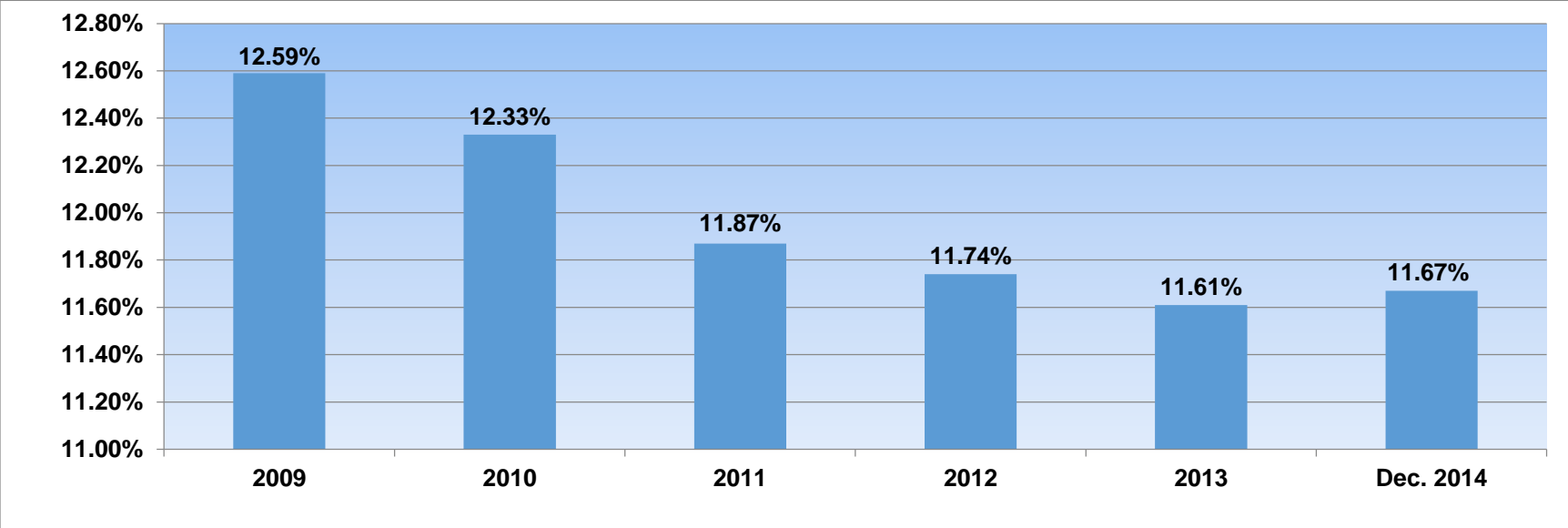


Above 20 %

Comparative Yearly System Loss



Comparative National System Loss



Regional System Loss Performance

Region	1 st Quarter 2014	2 nd Quarter 2014	3 rd Quarter 2014	4 th Quarter 2014	Variance	Remarks
Region 1	10.48	12.40	12.05	11.97	-0.08	Improved
Region 2	12.81	13.23	13.21	12.71	-0.50	Improved
CAR	9.76	9.59	9.73	10.08	0.35	Retrogressed
Region 3	9.93	9.95	10.103	10.10	-0.003	Improved
Region 4-A	12.67	11.87	11.90	11.79	-0.11	Improved
Region 4-B	12.37	11.72	11.62	11.20	-0.42	Improved
Region 5	14.53	15.23	14.71	14.72	0.01	Retrogressed
Region 6	12.75	13.41	12.87	12.48	-0.39	Improved
Region 7	9.35	9.25	9.89	9.14	-0.75	Improved
Region 8	16.16	14.45	13.58	12.47	-1.11	Improved
Region 9	18.98	17.26	17.11	17.04	-0.07	Improved
ARMM	31.31	26.27	27.18	28.01	0.83	Retrogressed
Region 10	9.58	8.72	8.93	8.97	0.04	Retrogressed
Region 11	14.90	12.20	13.14	13.37	0.23	Retrogressed
CARAGA	10.48	10.65	10.98	10.89	-0.09	Improved
Region 12	12.29	14.28	13.35	12.05	-1.30	Improved



2. System Reliability

System Average Interruption Frequency Index (SAIFI)

There is a great improvement in the compliances to SAIFI for the fourth quarter compared to the third quarter. For the fourth quarter, eighty four (84) ECs or 70% are within standard while twenty one (21) ECs or 17% are below standard. Sixteen (16) ECs or 13% have not submitted any data.

For the third quarter, thirty eight (38) ECs or 31% are within standard, sixty five (65) ECs or 54% are below standard and eighteen (18) ECs or 15% have not submitted any data.

For the second quarter, thirty four (34) ECs or 28% are within standard, seventy nine (79) ECs or 66% are below standard and seven (7) ECs or 6% have not submitted any data.

For the first quarter, eighty six (86) ECs or 72% are within standard, six (6) ECs or 5% are below standard and twenty eight (28) ECs or 23% have not submitted any data.

The data for System Average Interruption Frequency Index (SAIFI) and System Average Interruption Duration Index (SAIDI) for the first, second, third and fourth quarters of 2014 are, as follows:

Fourth Quarter

Region	SAIFI			SAIDI		
	Within Standard	Below Standard	No Data	Within Standard	Below Standard	No Data
I	5	0	1	5	0	1
II	5	1	1	6	0	1
CAR	3	1	1	4	0	1
III	14	0	0	14	0	0
IV-A	5	0	0	5	0	0
IV-B	4	3	1	6	1	1
V	5	4	2	9	0	2
VI	9	1	0	10	0	0
VII	6	3	1	9	0	1
VIII	7	3	1	8	2	1
IX	0	3	1	2	1	1
X	7	0	1	7	0	1
XI	3	0	0	3	0	0
XII	3	1	0	4	0	0
ARMM	1	1	5	1	1	5
CARAGA	7	0	0	7	0	0
Total	84	21	16	100	5	16

Third Quarter

Region	SAIFI			SAIDI		
	Within Standard	Below Standard	No Data	Within Standard	Below Standard	No Data
I	3	2	1	5	0	1
II	3	2	2	3	2	2
CAR	1	3	1	2	2	1
III	6	8	0	9	5	0
IV-A	1	4	0	5	0	0
IV-B	0	7	1	2	5	1
V	3	5	3	2	6	3
VI	4	5	1	6	3	1
VII	2	7	1	2	7	1
VIII	2	9	0	4	7	0
IX	0	4	0	1	3	0
X	7	0	1	5	2	1
XI	1	2	0	1	2	0
XII	1	3	1	3	1	1
ARMM	0	1	6	0	1	6
CARAGA	4	3	0	5	2	0
Total	38	65	18	55	48	18

Second Quarter

Region	SAIFI			SAIDI		
	Within Standard	Below Standard	No Data	Within Standard	Below Standard	No Data
I	3	3	0	3	3	0
II	2	5	0	2	5	0
CAR	2	3	0	2	3	0
III	6	8	0	6	8	0
IV-A	2	3	0	3	2	0
IV-B	1	7	0	2	6	0
V	3	8	0	3	8	0
VI	2	8	0	3	7	0
VII	3	7	0	4	6	0
VIII	3	8	0	2	9	0
IX	1	3	0	3	1	0
X	1	7	0	1	7	0
XI	0	3	0	0	3	0
XII	0	4	0	0	4	0
ARMM	0	0	7	0	0	7
CARAGA	5	2	0	5	2	0
Total	34	79	7	39	74	7

First Quarter

Region	SAIFI			SAIDI		
	Within Standard	Below Standard	No Data	Within Standard	Below Standard	No Data
I	5	0	1	5	0	1
II	4	0	3	4	0	3
CAR	4	0	1	4	0	3
III	13	0	1	13	0	1
IV-A	5	0	0	5	0	0
IV-B	6	0	2	5	1	2
V	5	2	4	5	2	4
VI	6	2	2	5	3	2
VII	9	0	1	9	0	1
VIII	6	1	4	6	1	4
IX	3	1	0	2	2	0
X	7	0	1	7	0	1
XI	2	0	1	2	0	1
XII	4	0	0	4	0	0
ARMM	0	0	7	0	0	7
CARAGA	7	0	0	7	0	0
Total	86	6	28	83	9	28

The compliances to SAIFI are shown in the following tables and graphs:

4th Quarter

Particulars	No. of ECs	Percentage
Within Standard	84	70%
Below Standard	21	17%
No Data	16	13%
Total	121	100%

3rd Quarter

Particulars	No. of ECs	Percentage
Within Standard	38	31%
Below Standard	65	54%
No Data	18	15%
Total	121	100%

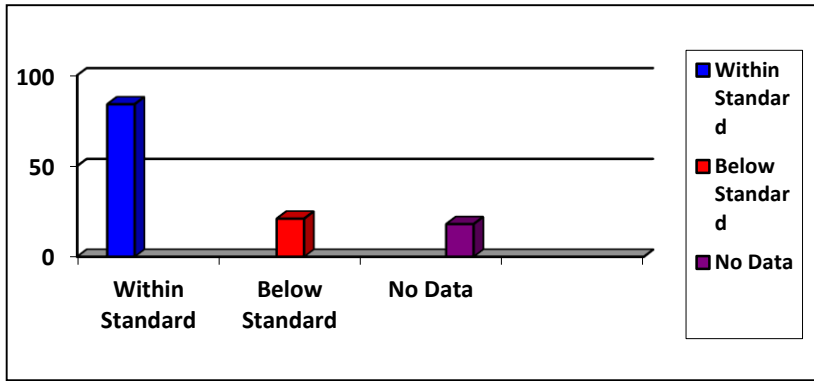
2nd Quarter

Particulars	No. of ECs	Percentage
Within Standard	34	28%
Below Standard	79	66%
No Data	7	6%
Total	120	100%

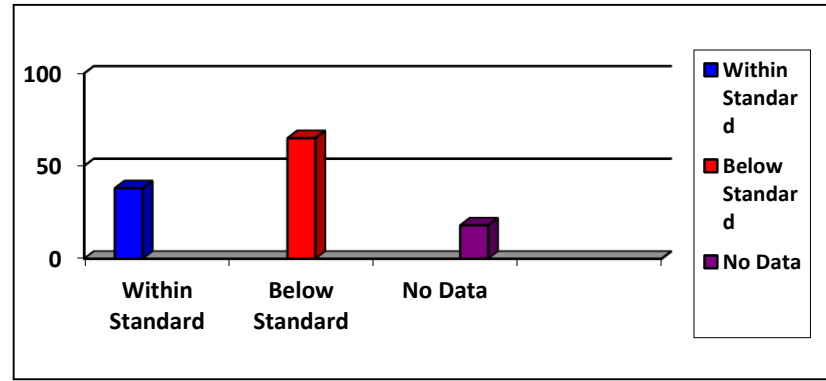
1st Quarter

Particulars	No. of ECs	Percentage
Within Standard	86	72%
Below Standard	6	5%
No Data	28	23%
Total	120	100%

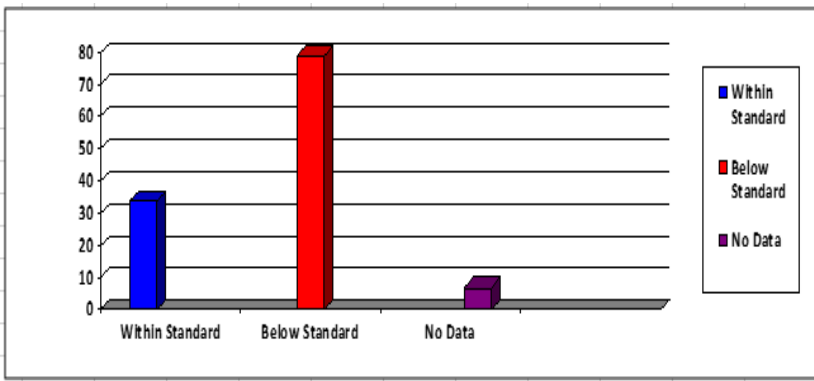
4th Quarter



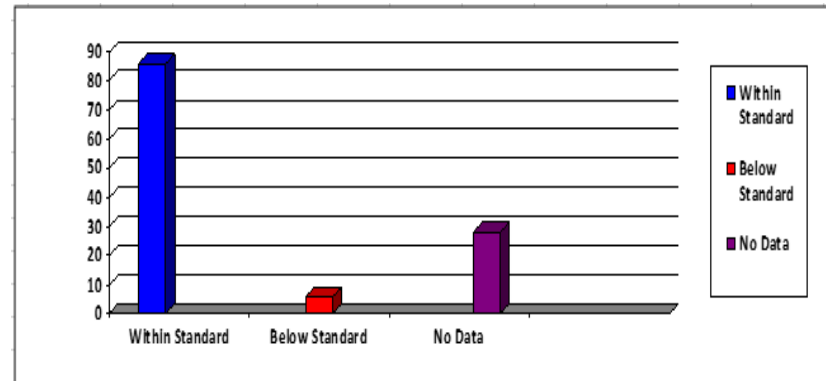
3rd Quarter



2nd Quarter



1st Quarter



System Average Interruption Duration Index (SAIDI)

There is a significant improvement in the compliances to SAIDI for the fourth quarter compared to the third quarter. For the fourth quarter, one hundred (100) ECs or 83% are within standard while five (5) ECs or 4% are below standard. Sixteen (16) ECs or 13% have not submitted any data.

For the third quarter, fifty five (55) ECs or 45% are within standard, forty eight (48) ECs or 40% are below standard while eighteen (18) ECs or 15%.

For the second quarter, only thirty nine (39) ECs or 32% are within standard, seventy four (74) ECs or 62% are below standard and seven (7) ECs or 6% have not submitted any data.

For the first quarter, eighty three (83) ECs or 69% are within standard, nine (9) ECs or 8% are below standard and 28 ECs or 23% have not submitted any data.

The compliances to SAIDI are shown in the following tables and graphs:

4th Quarter

Particulars	No. of ECs	Percentage
Within Standard	100	83%
Below Standard	5	4%
No Data	16	13%
Total	121	100%

3rd Quarter

Particulars	No. of ECs	Percentage
Within Standard	55	45%
Below Standard	48	40%
No Data	18	15%
Total	121	100%

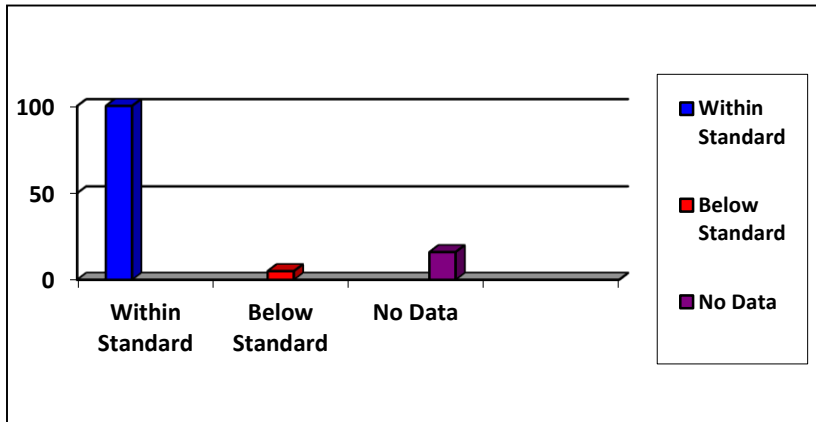
2nd Quarter

Particulars	No. of ECs	Percentage
Within Standard	39	32%
Below Standard	74	62%
No Data	7	6%
Total	120	100%

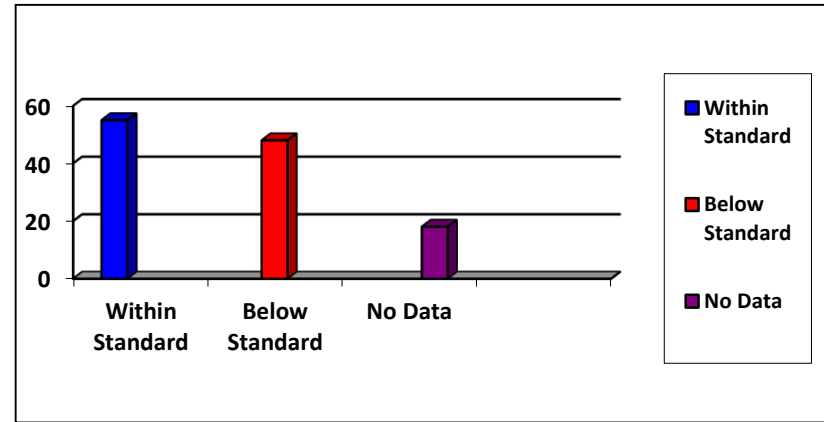
1st Quarter

Particulars	No. of ECs	Percentage
Within Standard	83	69%
Below Standard	9	8%
No Data	28	23%
Total	120	100%

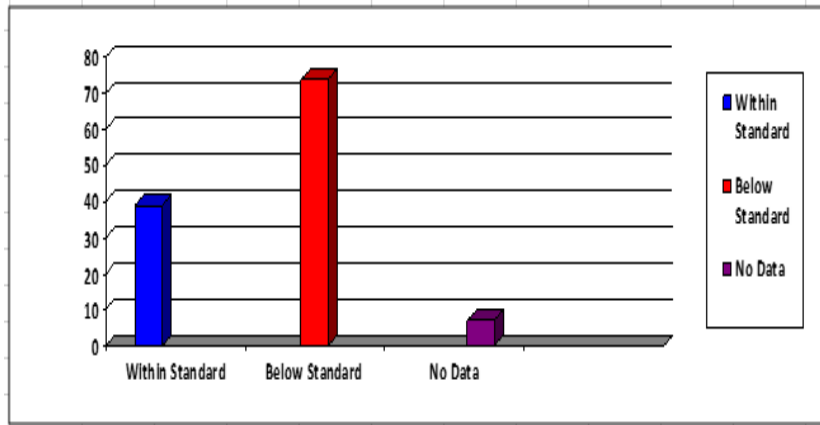
4th Quarter



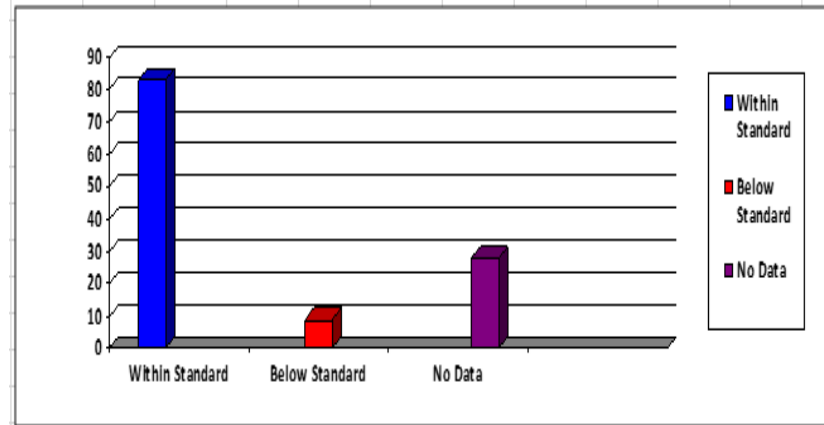
3rd Quarter



2nd Quarter



1st Quarter



C. Compliance to Governance and Institutional Standards

In the determination of the overall ratings of the ECs, the following institutional standards and parameters were used, namely:

Good governance		Leadership and Management	
Cash Advances/Power Accounts Payable	10%	Employee-Consumer ratio	10%
Board of Directors Attendance	10%	Availability of Retirement Fund	10%
Continuing Qualifications	10%	Sufficient number of Professional	5%
Absence of verified complaint	5%		
Organizational Restructuring	5%	Sub Total	25%
Information Technology			
Infrastructure	5%	Stakeholders	
Audit rating	5%	Customer Service Standards	14%
		Conduct of AGMA	4%
Sub Total	50%	District Election	4%
		Action on Consumer Complaint	3%
		Sub Total	25%
		Total	100%

There is an earnest improvement in the compliances to institutional standards and parameters. The improvement arises from the increased awareness to the governance and institutional standards and parameters and clearer understanding of the responsibilities of the Board of Directors and management through the various consultations, competency seminars and training programs conducted by the NEA for the EC Board, management and personnel.

For the fourth quarter of 2014, ninety one (91) ECs or 75% are compliant while thirteen (13) ECs or 11% are partially compliant. Seventeen (17) ECs or 14% got a rating of below 60% or non-compliant.

For the third quarter, eighty (80) ECs or 66% got a rating of 80% and above or compliant, twenty one (21) ECs or 17% got a rating of 60% to 79% or partial compliant and twenty (20) ECs or 17% got a rating of below 60% or non-compliant

For the second quarter, seventy six (76) ECs or 63% got a rating of 80% and above or compliant, twenty one (21) ECs or 17% got a rating of 60% to 79% or partial compliant and twenty four (24) ECs or 20% got a rating of below 60% or non-compliant.

For the first quarter, twenty nine (29) ECs or 24% got a rating of 80% and above or compliant, thirty eight (38) ECs or 31% got a rating of 60% to 79% or partial compliant and eight (8) ECs or 7% have not submitted any data or non-compliant.

COMPLIANT			COMPLIANT		
Electric Cooperative		Average Rating	Electric Cooperative		Average Rating
1	BENECO	100.00	13	SOCOTECO II	100.00
2	TARELCO I	100.00	14	ANECO	100.00
3	TARELCO II	100.00	15	ASELCO	100.00
4	NEECO II - Area 1	100.00	16	SURNECO	100.00
5	PELCO I	100.00	17	SURSECO I	100.00
6	ILECO I	100.00	18	SURSECO II	100.00
7	ILECO II	100.00	19	ISECO	99.00
8	CEBECO II	100.00	20	MARELCO	99.00
9	CEBECO III	100.00	21	CENECO	99.00
10	SAMELCO II	100.00	22	NORECO I	99.00
11	BUSECO	100.00	23	CEBECO I	99.00
12	SOCOTECO I	100.00	24	BILECO	99.00

COMPLIANT			COMPLIANT		
Electric Cooperative		Average Rating	Electric Cooperative		Average Rating
25	DORECO	99.00	52	BATANELCO	93.00
26	NEECO II - Area 2	98.00	53	LUBELCO	93.00
27	ZAMECO I	98.00	54	FICELCO	93.00
28	CASURECO II	98.00	55	LEYECO IV	93.00
29	GUIMELCO	97.33	56	ZAMECO II	92.67
30	BOHECO I	97.00	57	DASURECO	92.33
31	BOHECO II	97.00	58	SUKELCO	92.33
32	MORESCO I	97.00	59	MOPRECO	91.00
33	MORESCO II	97.00	60	BISELCO	91.00
34	INEC	96.67	61	CAMELCO	90.67
35	ORMECO	96.67	62	PENELCO	90.00
36	LEYECO II	96.67	63	TIELCO	90.00
37	BATELEC I	96.00	64	CAPELCO	90.00
38	SOLECO	96.00	65	ILECO III	90.00
39	LUELCO	95.00	66	SAMELCO I	90.00
40	NEECO I	95.00	67	COTELCO	90.00
41	CANORECO	95.00	68	BANELCO	89.67
42	AKELCO	95.00	69	ISELCO I	89.00
43	ANTECO	95.00	70	BATELEC II	89.00
44	LEYECO III	95.00	71	FLECO	89.00
45	ZAMSURECO I	95.00	72	ROMELCO	88.00
46	SIARELCO	95.00	73	ESAMELCO	88.00
47	DIELCO	95.00	74	MOELCI II	87.00
48	COTELCO-PPALMA	94.00	75	DANECO	86.33
49	PROSIELCO	93.67	76	NONECO	86.00
50	CAGELCO I	93.33	77	IFELCO	85.00
51	CAGELCO II	93.33	78	PANELCO I	84.00

COMPLIANT			COMPLIANT		
Electric Cooperative		Average Rating	Electric Cooperative		Average Rating
79	KAELCO	84.00	86	QUEZELCO II	81.00
80	OMEKO	84.00	87	ZAMCELCO	81.00
81	CASURECO I	83.67	88	FIBECO	81.00
82	SULECO	83.33	89	LEYECO V	80.67
83	CELCO	83.00	90	PRESCO	80.00
84	AURELCO	82.00	91	NOCECO	80.00
85	CASURECO IV	81.33			
PARTIALLY COMPLIANT			NON-COMPLIANT		
Electric Cooperative		Average Rating	Electric Cooperative		Average Rating
1	SORECO I	78.33	1	SIASELCO	56.67
2	QUIRELCO	76.00	2	MOELCI I	55.33
3	MASELCO	76.00	3	ISELCO II	55.00
4	ZANECO	75.00	4	SORECO II	54.33
5	PALECO	72.00	5	PELCO III	54.00
6	LANECO	71.00	6	PELCO II	53.00
7	NORSAMELCO	70.33	7	BASELCO	52.00
8	QUEZELCO I	70.00	8	NORECO II	51.33
9	TISELCO	69.00	9	TAWELCO	34.33
10	PANELCO III	68.00	10	CASURECO III	33.33
11	ZAMSURECO II	65.33	11	DORELCO	6.33
12	CENPELCO	63.67	12	NUVELCO	0.00
13	SAJELCO	61.33	13	ABRECO	0.00
			14	ALECO	0.00
			15	CASELCO	0.00
			16	LASURECO	0.00
			17	MAGELCO	0.00

The comparative tables and graphs showing the compliances to governance and institutional standards for the first, second, third and fourth quarters of 2014 are, as follows:

4th Quarter

Rating	Particulars	No. of ECs	%
80% and above	Compliant	91	75%
60 -79%	Partial compliant	13	11%
Below 60%	Non-compliant	17	14%
No Data	-	-	-
Total		121	100%

3rd Quarter

Rating	Particulars	No. of ECs	%
80% and above	Compliant	80	66%
60 -79%	Partial compliant	21	17%
Below 60%	Non-compliant	20	17%
No Data	-	-	-
Total		121	100%

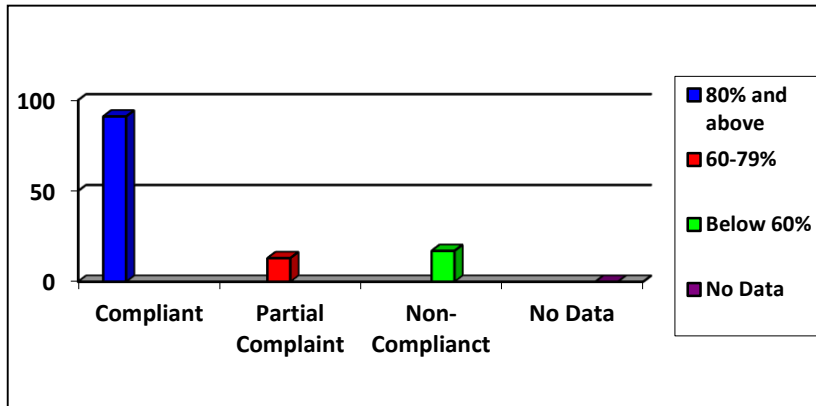
2nd Quarter

Rating	Particulars	No. of ECs	%
80% and above	Compliant	76	63%
60 -79%	Partial Compliant	21	17%
Below 60%	Non-compliant	24	20%
No Data	No Data	0	0%
Total		121	100%

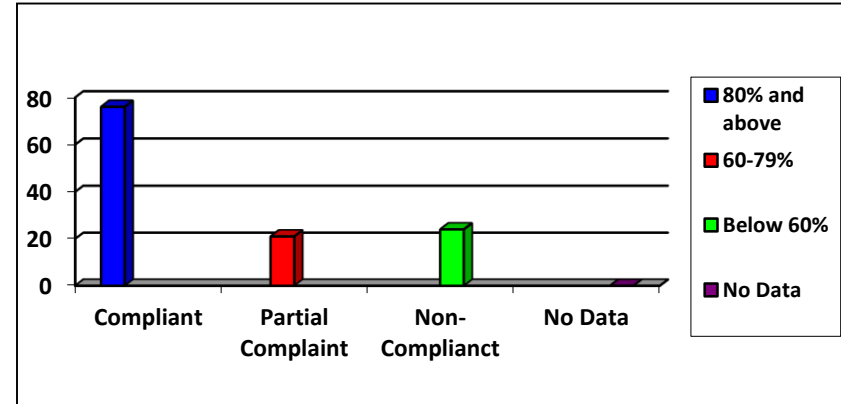
1st Quarter

Rating	Particulars	No. of ECs	%
80% and above	Compliant	29	24%
60 -79%	Partial Compliant	38	31%
Below 60%	Non-compliant	46	38%
No Data	No Data	8	7%
Total		121	100%

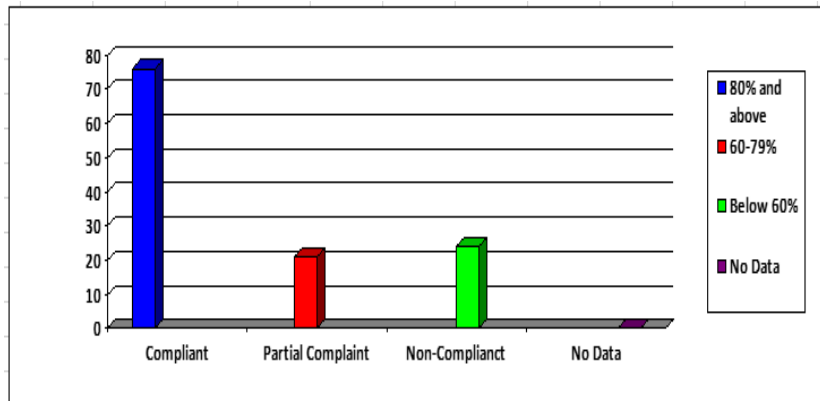
4th Quarter



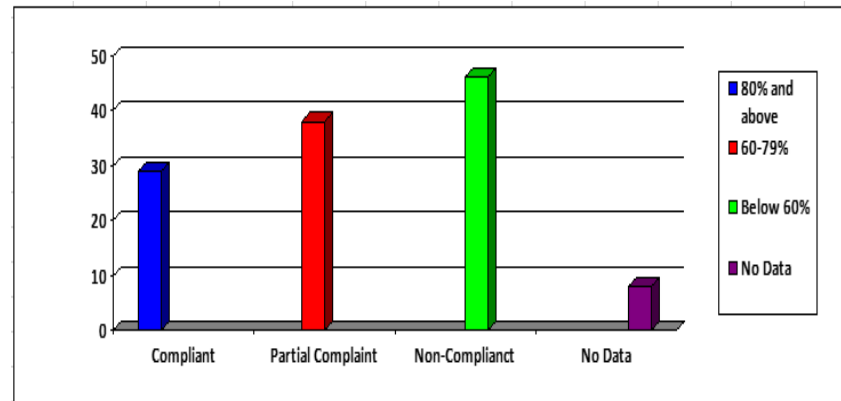
3rd Quarter



2nd Quarter



1st Quarter



VI. STATUS, ACTIONS TAKEN AND RECOMMENDATIONS FOR RED OR AILING ECs

Stated hereunder are the status, actions taken and recommendations for the following eleven (11) ailing ECs, to wit:

1. PELCO III
2. ALECO
3. CASURECO III
4. MASELCO
5. TISELCO
6. NORSAMELCO
7. TAWELCO
8. BASELCO
9. SULECO
10. LASURECO
11. MAGELCO

1. ALECO - It is under a twenty five (25) year concession agreement with San Miguel Energy Corporation (SMEC) and the concessionaire is taking steps to revitalize its operations and improve its financial condition. ALECO has a negative net worth of Php1.926 billion as of December 31, 2013 and has been incurring unabated net losses since 1996. It is in arrears in its accounts payable with its power supplier and the NGCP.

2. PELCO II - PELCO II is under a twenty (20) year Investment Management Contract (IMC) with COMSTECH, Inc. and Manila Electric Company. It is classified as Yellow-1 as of December 31, 2014. In accordance with the terms and conditions of the IMC, the investor-manager settled PELCO II's debts with NEA and its power supplier. With the infusion of funds from the Investor-Manager, the financial condition of PELCO II has dramatically improved. It posted a positive net worth of Php241.8 million as of December 31, 2014 from a negative net worth of Php730 million as of December 31, 2013. It registered a net income of Php222 million and system loss of 12.99%. It is now current in its power accounts to its power supplier and NGCP.

3. PELCO III - The Board and management of PELCO III presented to the NEA its road map to improve its shaky liquidity position and address its recurring defaults in the payment of its power bills. Under its road map, PELCO III has committed to improve its collection efficiency by intensifying its collection efforts. Notwithstanding the road map, it appears that a long term solution for its financial difficulties and operational inefficiencies is nowhere in sight. It has a collection efficiency of 64.95% from 65.04%; system loss of 16.16% as of December 31, 2014 from 16.73% as of September 30, 2014. It has an accumulated negative net worth of Php855.6 million from negative net worth of Php872.8 million as of September 30, 2014. It is current in its accounts payable to NGCP but in arrears in its restructured accounts payable to its power supplier. NEA and PELCO III are working for an appropriate option to address its shaky financial position.
4. CASURECO III - In February, 2014, a NEA Project Supervisor was assigned to CASURECO III to help in improving its operational efficiency and in finding suitable solutions for its chronic liquidity problems. The NEA is closely monitoring the implementation of its road map to improve its operations and financial condition and to address its recurring defaults in the payment of its power bills. It has a collection efficiency of 88.06%, a negative net worth of Php473.1 million as of December 31, 2014 and in arrears in its restructured accounts payable with its power supplier and arrears in its accounts payable with NGCP. The Board of Directors of CASURECO III decided to conduct a public consultation on the issue of private sector participation.
5. MASELCO - The NEA is closely monitoring the implementation of MASELCO's road map to improve its operations and liquidity position and address its recurring defaults in the payment of its power bills. It has a collection efficiency of 87.13% as of December 31, 2014 from 86.99%, system loss of 19.08% from 20.23% as of September 30, 2014 and in arrears in its restructured accounts with its power supplier. It has a net loss of Php3.74 million. However, it registered a net worth of Php217.1 million for the twelve (12) month period ending December 31, 2014.
6. NORSAMELCO - On July 19, 2013, a Project Supervisor was assigned to NORSAMELCO to improve its operational efficiency and financial condition. The NEA is closely monitoring the implementation and efficacy of NORSAMELCO's road map to improve its liquidity position and to address its recurring defaults in the payment of its power bills. It has collection efficiency of 81.89%, system loss of 20.69% as of December 31, 2014. It is in current with its restructured accounts to NGCP but arrears in its accounts payable with its power supplier. Although it registered a negative net worth of Php165 million for the twelve (12) month period ending December 31, 2014, it posted a net income of Php32 million.
7. TISELCO - The operation of TISELCO is being closely monitored. Its financial condition improved by registering a net income of Php11.9 million for the twelve (12) month period ending December 31, 2014 and a net worth of Php40.4 million. With a favorable cash general fund, it should settle its arrearages with its power supplier. It has system loss of 17.21% as of December 31, 2014.

8. Ailing ECs under the AUTONOMOUS REGION IN MUSLIM MINDANAO (ARMM) - It is recommended that a uniform approach should be taken for the ECs in the ARMM. The various options for ailing ECs under RA 10531 such as private sector participation may not be appropriate given the enormity and magnitude of their operational and financial problems. The settlement of their huge indebtedness may involve the support of the national government in the form of a legislated debt relief under the aegis of the Bangsamoro Basic Law. As of December 31, 2014, the financial and operational conditions of the ARMM ECs are, as follows:
- a. TAWELCO - It has a collection efficiency of 34.33%, system loss of 28.76%, net loss of Php90.5 million, negative net worth of Php617 million and in arrears in its accounts payable with its power supplier.
 - b. BASELCO - It has a collection efficiency of 57%, system loss of 31.72%, net loss of Php41.6 million, negative net worth of Php1.135 billion and in arrears in the payment of its accounts payable to its power supplier.
 - c. SULECO - It has a collection efficiency of 23.33%, system loss of 31.24%, net loss of Php18.5 million, negative net worth of Php579 million and in arrears in its accounts payable to its power supplier.
 - d. LASURECO - It has a system loss of 15.19%, net loss of Php30 million, negative net worth of Php1.62 billion as of June 30, 2014. It is current in its restructured account payable to NGCP but in arrears in its accounts payable with its power supplier.
 - e. MAGELCO - It has a collection efficiency of 48.49%, system loss of 41.23%, net loss of Php60 million, negative net worth of Php246 million. It is current in its accounts payable to NGCP but in arrears in its accounts payable to its power supplier.

CLASSIFICATION OF ELECTRIC COOPERATIVES

As of December 31, 2014

GREEN ELECTRIC COOPERATIVE		INDICATORS									
		Cash General Fund	One Mo. Working Capital	Coll. Eff.	GENCO As of Dec 2014	NGCP As of Dec 2014	Profitability	Networth 2014	Networth 2013	Networth 2012	System Loss
REGION I											
1	INEC	158,822	154,073	100.27	Current	Current	24,743	628,228	592,470	513,954	11.35
2	ISECO	367,010	133,819	100.00	Current	Current	164,779	1,042,144	781,271	772,217	10.48
3	LUELCO	142,820	104,261	102.38	Current	Current	99,930	838,700	633,716	585,637	11.57
REGION II											
4	CAGELCO I	249,412	128,992	97.93	Current	Current	122,860	693,814	473,183	415,181	11.39
5	CAGELCO II	176,784	82,056	98.29	Current	Current	56,972	617,953	537,776	450,876	12.31
CAR											
6	BENECO	512,494	207,582	103.08	Current	Current	41,513	1,894,719	1,629,104	1,725,358	9.48
7	MOPRECO	28,849	13,847	97.78	Current	Current	11,718	317,513	244,043	116,611	11.59
REGION III											
8	AURELCO	59,989	24,544	95.01	Current	Current	35,145	304,104	238,651	200,209	11.00
9	TARELCO I	416,256	112,418	101.44	Current	Current	175,038	1,048,066	1,173,279	1,037,455	8.20
10	TARELCO II	377,041	121,166	97.96	Current	Current	94,414	1,009,993	856,576	838,027	7.86
11	NEECO II - Area I	189,772	100,826	96.43	Current*	Current	44,169	647,973	632,950	559,636	10.97
12	NEECO II - Area II	139,754	103,576	96.61	Current	Current	94,438	544,477	512,698	491,860	9.17
13	PRESKO	22,998	21,653	95.78	Current	Current	17,488	144,799	107,771	105,970	9.10
14	PELCO I	298,610	97,807	97.48	Current	Current	151,285	1,184,408	1,032,995	863,591	7.98
15	PENELCO	223,064	213,801	95.79	Current	Current	148,856	1,638,084	1,580,508	1,565,283	7.79
REGION IV-A											
16	BATELEC I	377,373	157,901	96.16	Current	Current	374,362	1,267,291	790,412	821,154	11.64
17	QUEZELCO II	41,539	18,965	95.87	Current	Current	21,223	267,582	228,302	179,801	13.00
REGION IV-B											
18	ORMECO	185,534	132,266	97.54	Current	N/A	77,108	1,055,573	985,152	885,167	9.98
19	PALECO	316,129	132,893	97.40	Res-Current	N/A	61,427	583,546	558,176	530,237	10.51
REGION VI											
20	ANTECO	103,387	58,389	95.81	Current	Current	61,954	817,889	777,681	702,233	11.93
21	ILECO I	347,170	155,701	98.58	Current	Current	68,046	835,976	749,346	681,504	9.54
22	ILECO II	208,150	84,925	95.88	Current	Current	66,519	763,924	696,203	678,625	11.55
23	ILECO III	100,681	40,631	95.67	Current	Current	23,937	323,712	367,817	374,178	11.40
24	NONECO	132,484	114,367	96.36	Current	Current	56,743	473,653	443,240	433,685	10.76

CLASSIFICATION OF ELECTRIC COOPERATIVES

As of December 31, 2014

GREEN ELECTRIC COOPERATIVE		INDICATORS									
		Cash General Fund	One Mo. Working Capital	Coll. Eff.	GENCO As of Dec 2014	NGCP As of Dec 2014	Profitability	Networth 2014	Networth 2013	Networth 2012	System Loss
	REGION VII										
25	CEBECO I	242,485	99,268	100.00	Current	Current	63,927	747,572	682,502	619,190	9.62
26	CEBECO II	339,534	169,718	98.71	Current	Current	113,542	841,740	729,819	653,498	6.90
27	CEBECO III	112,199	61,921	102.16	Current	Current	48,939	446,136	344,934	281,898	6.96
28	BOHECO I	146,113	79,029	100.30	Current	Current	42,518	910,684	823,274	807,884	5.29
29	BOHECO II	65,235	53,136	96.44	Current	Current	39,880	520,346	465,794	310,291	10.32
30	NORECO I	54,504	37,698	97.53	Current	Current	1,152	396,933	284,785	232,438	12.88
31	PROSIELCO	12,884	12,002	99.54	Current	N/A	223	169,075	118,086	106,512	10.63
	REGION VIII										
32	LEYECO IV	67,286	33,312	99.41	Current	Current	23,557	353,203	397,276	191,955	11.27
33	SOLECO	84,738	46,318	97.73	Current	Current	55,485	712,630	627,027	473,099	12.41
	REGION IX										
34	ZAMSURECO I	184,016	93,000	102.16	Current	Current	63,882	930,558	866,688	758,726	11.98
	REGION X										
35	CAMELCO	54,084	10,637	97.53	Current	Current	15,787	319,748	220,598	104,973	12.23
36	MORESCO I	182,224	107,679	101.45	Current	Current	64,225	798,256	631,912	533,941	2.71
37	MOELCI II	107,128	65,215	95.57	Current	Current	59,584	482,539	411,325	410,517	11.74
38	BUSECO	205,855	61,014	99.09	Current	Current	84,501	609,671	519,456	475,846	10.43
	REGION XI										
39	DASURECO	175,297	137,925	98.91	Current	Current	70,487	1,013,515	880,979	845,818	8.99
	REGION XII										
40	COTELCO	110,675	83,933	95.43	Res-Current	Current	40,821	1,157,994	994,957	487,500	12.96
41	SOCOTECO I	222,103	103,322	96.39	Current	Current	62,357	658,890	722,021	548,537	12.61
42	SOCOTECO II	395,636	386,455	98.69	Current	Current	236,835	1,064,981	334,132	744,272	11.03
	CARAGA										
43	ASELCO	136,923	102,853	98.21	Current	Current	73,293	694,160	623,816	396,424	8.94
44	SIARELCO	17,361	8,895	99.99	Current	Current	11,244	154,923	98,023	118,346	8.32
45	DIELCO	15,795	6,547	100.00	Current	N/A	4,684	180,053	185,080	140,051	5.23
46	SURSECO I	37,527	26,210	97.28	Current	Current	22,082	373,901	315,948	231,597	11.17
47	SURNECO	80,252	65,026	99.00	Current	Current	44,634	351,886	166,885	129,457	10.97

CLASSIFICATION OF ELECTRIC COOPERATIVES

As of December 31, 2014

YELLOW 1 ELECTRIC COOPERATIVE		INDICATORS									
		Cash General Fund	One Mo. Working Capital	Coll. Eff.	GENCO As of Dec 2014	NGCP As of Dec 2014	Profitability	Networth 2014	Networth 2013	Networth 2012	System Loss
	REGION I										
1	PANELCO I	108,649	55,051	100.00	Current	Current	21,991	575,185	486,527	429,064	13.93
2	PANELCO III	206,334	175,808	83.92	Current	Current	107,297	1,106,398	851,425	880,065	15.79
	REGION II										
3	BATANELCO	4,201	4,630	86.88	Current	N/A	3,320	69,784	161,679	62,330	6.89
4	QUIRELCO	10,147	20,294	94.44	Current	Current	15,272	198,549	169,936	124,428	16.15
5	ISELCO I	178,597	198,265	86.73	Current	Current	263,472	825,403	300,265	315,645	13.30
6	ISELCO II	80,949	100,946	89.05	Current	Current	72,931	762,763	535,500	421,579	15.40
	CAR										
7	IFELCO	16,323	12,516	94.74	Current*	Current	8,607	382,857	370,586	246,152	15.50
8	KAELCO	19,074	18,953	96.01	With-Arrears	Current	29,323	477,291	385,054	183,750	13.05
	REGION III										
9	NEECO I	242,909	77,554	92.99	Current	Current	139,949	593,229	443,680	348,628	12.74
10	PELCO II	169,952	233,488	93.04	Current	Current	222,190	241,769	(730,354)	(793,195)	12.99
11	ZAMECO I	90,665	51,111	93.88	Current	Current	69,444	373,011	313,442	375,304	12.09
12	ZAMECO II	156,757	67,379	91.29	Current	Current	38,843	565,198	576,533	523,907	12.30
13	SAJELCO	107,820	48,841	94.65	Current	Current	21,254	358,775	341,743	302,296	9.79
	REGION IV-A										
14	BATELEC II	270,911	426,495	97.00	Current	Current	18,070	2,872,846	2,982,995	3,057,433	10.50
15	FLECO	18,088	52,273	94.26	With-Arrears	Current	57,631	376,915	93,391	29,912	11.91
16	QUEZELCO I	78,118	89,288	94.22	Current	Current	34,576	728,040	438,852	358,406	17.37

* As of September 2014

CLASSIFICATION OF ELECTRIC COOPERATIVES

As of December 31, 2014

YELLOW 1 ELECTRIC COOPERATIVE		INDICATORS									
		Cash General Fund	One Mo. Working Capital	Coll. Eff.	GENCO As of Dec 2014	NGCP As of Dec 2014	Profitability	Networth 2014	Networth 2013	Networth 2012	System Loss
	REGION IV-B										
17	BISELCO	4,176	8,679	85.62	With-Arrears	N/A	916	176,380	128,933	104,138	12.08
18	LUBELCO	4,652	2,738	100.00	Current	N/A	(461)	69,612	57,745	29,649	11.28
19	MARELCO	10,519	24,553	96.62	Res-Current	N/A	7,544	153,530	259,630	106,040	9.26
20	OMECO	14,015	51,075	97.07	Res-Current	N/A	11,873	(75,494)	(61,668)	(82,393)	14.31
21	TIELCO	1,658	17,290	99.50	Current	N/A	3,125	195,511	137,605	106,452	8.83
22	ROMELCO	1,361	9,298	89.95	Current	N/A	12,432	154,738	106,922	76,435	10.86
	REGION V										
23	CASURECO I	71,518	37,169	99.55	Res-Current	Current	1,340	208,636	107,690	89,966	14.95
24	CASURECO II	134,534	157,380	93.91	Current	Current	58,984	856,036	640,368	752,605	14.49
25	CANORECO	61,395	81,114	92.98	Res-Current	Current	50,919	349,910	252,882	221,325	10.17
26	FICELCO	10,520	29,751	97.04	Current	N/A	(10,139)	275,016	282,469	278,443	14.54
27	SORECO I	45,416	28,597	90.93	Res-With Arrears	With-Arrears	33,255	294,742	174,479	58,091	12.87
28	CASURECO IV	45,407	31,644	94.27	Current	Current	29,267	558,473	494,778	339,267	12.32
	REGION VI										
29	AKELCO	90,692	165,627	102.57	Res-Current	Current	71,895	676,637	514,261	394,241	10.41
30	CAPELCO	47,686	118,939	94.94	Res-With Arrears	Current	48,015	927,958	367,810	400,309	12.28
31	NOCECO	201,178	126,879	102.33	With-Arrears	Current	60,781	1,013,294	950,290	862,860	11.02
	REGION VII										
32	CELCO	(417)	7,351	100.60	Current	N/A	225	77,157	14,268	9,382	8.92
33	BANELCO	1,390	13,496	104.00	Current	N/A	6,067	179,989	94,404	69,210	8.55
34	NORECO II	205,630	177,571	92.17	Current	Current	82,154	927,585	817,380	699,322	15.36

CLASSIFICATION OF ELECTRIC COOPERATIVES

As of December 31, 2014

YELLOW 1 ELECTRIC COOPERATIVE		INDICATORS									
		Cash General Fund	One Mo. Working Capital	Coll. Eff.	GENCO As of Dec 2014	NGCP As of Dec 2014	Profitability	Networth 2014	Networth 2013	Networth 2012	System Loss
	REGION VIII										
35	LEYECO II	88,273	74,462	89.29	With-Arrears	Res-Current	25,458	671,677	446,534	432,582	3.80
36	LEYECO III	14,958	16,565	92.59	Current	Res-Current	32,956	212,177	(20,961)	69,218	7.85
37	LEYECO V	158,197	74,362	89.78	Res-Current	Res-Current	(37,316)	371,561	799,379	686,377	11.15
38	BILECO	22,509	16,740	97.70	Current	Current	13,119	132,738	121,399	112,007	15.37
39	SAMELCO II	86,453	32,272	93.09	Current	Current	34,810	565,284	476,323	424,978	12.87
	REGION IX										
40	ZANECO	52,704	94,145	93.44	Res-Current	Current	10,238	476,193	333,658	265,030	12.19
	REGION X										
41	MORESCO II	55,693	57,733	95.35	Current	Current	9,073	586,932	387,946	348,852	10.65
42	FIBECO	77,821	80,418	97.39	Current	Current	25,038	665,258	407,705	477,062	11.63
43	LANECO	16,909	31,638	97.00	Current	Current	30,949	250,983	138,106	152,131	16.06
44	MOELCI I	8,477	28,516	94.59	With-Arrears	Current	3,039	57,796	67,028	78,238	12.38
	REGION XI										
45	DORECO	32,798	49,292	90.36	Current	Current	52,641	538,142	462,061	401,993	9.53
	REGION XII										
46	SUKELCO	102,434	69,676	96.22	Current	Current	9,931	1,023,587	819,881	379,536	13.62
47	COTELCO-PPALMA	8,610	25,709	97.65	0	0	4,981	342,928	287,541	244,270	23.37
	CARAGA										
48	ANECO	143,377	159,593	95.71	Current	Current	58,892	739,129	698,576	650,388	12.34
49	SURSECO II	10,060	34,335	96.30	Current	Current	1,229	158,306	222,935	206,278	12.77
	ARMM										
50	SIASELCO	1,200	1,747	61.04	Res-With Arrears	N/A	2,818	53,396	55,834	41,729	10.68

CLASSIFICATION OF ELECTRIC COOPERATIVES

As of December 31, 2014

YELLOW 2 ELECTRIC COOPERATIVE		INDICATORS									
		Cash General Fund	One Mo. Working Capital	Coll. Eff.	GENCO As of Dec 2014	NGCP As of Dec 2014	Profitability	Networth 2014	Networth 2013	Networth 2012	System Loss
	REGION I										
1	CENPELCO	81,168	185,687	93.17	Res-With Arrears	Current	72,488	382,189	270,585	206,557	13.40
	REGION II										
2	NUVELCO	94,534	76,066	0.00	Current	Current	15,145	515,006	394,661	394,661	16.16
	CAR										
3	ABRECO	12,576	33,342	85.37	With-Arrears	With-Arrears	(28,898)	(132,526)	NDA	NDA	15.70
	REGION V										
4	SORECO II	47,469	54,606	92.72	Res-With Arrears	With-Arrears	40,796	250,419	145,916	152,851	15.88
	REGION VI										
5	GUIMELCO	14,017	22,642	94.82	With-Arrears	Current	295	150,028	179,953	186,259	13.08
6	CENECO	416,293	422,714	91.15	Current	Current	(30,398)	1,658,415	1,687,964	1,173,940	14.40
	REGION VIII										
7	ESAMELCO	19,731	0	0.00	Res-With Arrears	Res-Current	0	0	625,578	511,708	13.62
8	LEYECO I/DORELCO	34,840	0	0.00	Res-Current	Res-Current	0	0	177,808	90,922	14.36
9	SAMELCO I	2,692	29,325	92.31	Res-With Arrears	With-Arrears	16,491	47,712	14,717	68,166	16.99
	REGION IX										
10	ZAMSURECO II	42,263	53,216	93.52	Res-With Arrears	Current	(29,362)	340,266	339,204	281,712	19.97
11	ZAMCELCO	163,417	254,715	91.98	Res-Current	Res-Current	(100,264)	73,106	240,594	186,022	20.08
	REGION XI										
12	DANECO	97,072	214,877	61.46	Res-With Arrears	Current	324,088	1,304,235	855,096	862,957	16.99
	ARMM										
13	CASELCO	0	0	0.00	With-Arrears	N/A	0	0	4,487	4,487	0.00

CLASSIFICATION OF ELECTRIC COOPERATIVES

As of December 31, 2014

AILING ELECTRIC COOPERATIVE		INDICATORS									
		Cash General Fund	One Mo. Working Capital	Coll. Eff.	GENCO As of Dec 2014	NGCP As of Dec 2015	Profitability	Networth 2014	Networth 2013	Networth 2012	System Loss
1	PELCO III	60,426	89,230	64.95	Res-With Arrears	Current	(20,533)	(855,597)	(885,533)	(1,001,348)	16.16
2	ALECO	0	0	85.37	With-Arrears	With-Arrears	0	0	(1,925,569)	(1,925,569)	0.00
3	CASURECO III	48,043	52,858	88.06	Res-With Arrears	With-Arrears	23,563	(473,148)	(324,715)	(358,391)	19.05
4	MASELCO	(30,822)	39,202	87.13	Res-With Arrears	N/A	(3,735)	217,052	315,492	248,892	19.08
5	TISELCO	3,971	3,906	91.00	Res-With Arrears	N/A	11,947	40,376	18,955	8,923	17.21
6	NORSAMELCO	(2,438)	37,062	81.89	With-Arrears	Res-Current	32,019	(165,236)	(148,451)	(49,113)	20.69
7	TAWELCO	11,380	10,430	34.33	With-Arrears	N/A	(90,492)	(617,486)	(526,708)	(443,900)	28.76
8	BASELCO	5,924	19,040	57.00	With-Arrears	N/A	(41,632)	(1,134,641)	(883,660)	(844,772)	31.72
9	SULECO	(4,058)	20,628	23.33	With-Arrears	N/A	(18,538)	(578,688)	(559,225)	(518,870)	31.24
10	LASURECO	8,238	41,885	0.00	With-Arrears	Res-Current	(30,049)	0	(1,589,260)	(1,569,037)	15.19
11	MAGELCO	24,992	15,115	48.89	With-Arrears	Current	(60,318)	(246,305)	(159,439)	(98,989)	41.23

INSTITUTIONAL PERFORMANCE ASSESSMENT REPORT

For the Month of October 2014

Electric Cooperative	Good Governance (50%)								Leadership and Management (25%)				Stakeholders (25%)				Total	
	Cash Advance / Power Account Payables (10 pts.)	BOD Attendance (10 pts.)	BOD Continuing qualification (10 pts.)	Absence of verified complaint (5 pts.)	Reorganizational Structure (5 pts.)	IT Infrastructure (5 pts.)	Audit Rating (5 pts.)	Sub-total	Employee - Consumer ratio (10 pts.)	Avail. of retirement fund (10 pts.)	Sufficient no. of professional workforce (5 pts.)	Sub-total	Customer Service Standard (14 pts.)	Conduct of AGMA (4 pts.)	District Election (4 pts.)	Actions or consumer complaint (3 pts.)		Sub-total
REGION I																		
INEC	10	10	10	5	5	5	5	40	10	10	5	25	14	4	4	3	25	100
ISECO	10	10	10	5	5	4	5	49	10	10	5	25	14	4	4	3	25	99
LUELCO	10	10	10	5	0	5	5	45	10	10	5	25	14	4	4	3	25	95
PANELCO I	10	10	0	5	0	4	5	34	10	10	5	25	14	4	4	3	25	84
PANELCO III	0	10	0	5	0	3	NDA	18	10	10	5	25	14	4	4	3	25	68
CENPELCO	0	10	10	5	0	2	0	27	10	0	5	15	14	4	4	3	25	67
REGION II																		
BATANELCO	10	10	10	5	5	3	5	48	10	10	0	20	14	4	4	3	25	93
CAGELCO I	0	10	10	5	5	5	5	40	10	10	5	25	14	4	4	3	25	90
CAGELCO II	0	10	10	5	5	5	5	40	10	10	5	25	14	4	4	3	25	90
ISELCO I	0	10	10	5	5	4	5	39	10	10	5	25	14	4	4	3	25	89
ISELCO II	10	10	0	5	0	2	NDA	27	0	10	0	10	8	4	4	3	19	56
NUVELCO	NDA							0				0					0	0
QUIRELCO	10	10	10	5	0	3	NDA	38	0	10	5	15	12	4	4	3	23	76
CAR																		
BENECO	10	10	10	5	5	5	5	50	10	10	5	25	14	4	4	3	25	100
IFELCO	10	10	10	5	5	5	5	50	0	10	0	10	14	4	4	3	25	85
Kaelco	10	10	10	5	5	2	2	44	0	10	5	15	14	4	4	3	25	84
ABRECO	NDA							0				0					0	0
MOPRECO	10	10	10	5	5	4	5	49	10	10	0	20	14	4	4	NDA	22	91

INSTITUTIONAL PERFORMANCE ASSESSMENT REPORT

For the Month of October 2014

Electric Cooperative	Good Governance (50%)								Leadership and Management (25%)				Stakeholders (25%)					Total
	Cash Advance / Power Account Payables (10 pts.)	BOD Attendance (10 pts.)	BOD Continuing qualification (10 pts.)	Absence of verified complaint (5 pts.)	Reorganizational Structure (5 pts.)	IT Infrastructure (5 pts.)	Audit Rating (5 pts.)	Sub-total	Employee - Consumer ratio (10 pts.)	Avail. of retirement fund (10 pts.)	Sufficient no. of professional workforce (5 pts.)	Sub-total	Customer Service Standard (14 pts.)	Conduct of AGMA (4 pts.)	District Election (4 pts.)	Actions on consumer complaint (3 pts.)	Sub-total	
REGION III																		
AURELCO	10	10	10	5	5	2	5	47	0	10	0	10	14	4	4	3	25	82
TARELCO I	10	10	10	5	5	5	5	50	10	10	5	25	14	4	4	3	25	100
TARELCO II	10	10	10	5	5	5	5	50	10	10	5	25	14	4	4	3	25	100
NEECO I	10	10	10	5	5	5	0	45	10	10	5	25	14	4	4	3	25	95
NEECO II - AREA I	10	10	10	5	5	5	5	50	10	10	5	25	14	4	4	3	25	100
NEECO II - AREA II	10	10	10	5	5	5	5	50	10	10	5	25	12	4	4	3	23	98
SAJELCO	10	10	10	5	0	2	0	37	0	10	5	15	8	4	4	0	16	68
PRESCO	10	10	10	5	0	5	5	45	0	10	0	10	14	4	4	3	25	80
PELCO I	10	10	10	5	5	5	5	50	10	10	5	25	14	4	4	3	25	100
PELCO II	0	10	10	5	0	5	5	35	0	0	5	5	8	4	4	3	19	59
PELCO III	10	NDA	10	5	5	3	0	33	0	0	5	5	12	4	4	NDA	20	58
PENELCO	0	10	10	5	5	5	5	40	10	10	5	25	14	4	4	3	25	90
ZAMECO I	10	10	10	5	5	3	5	48	10	10	5	25	14	4	4	3	25	98
ZAMECO II	10	10	10	5	5	4	5	49	10	10	5	25	14	4	4	0	22	96
REGION IVA/VB																		
IV A - CALABARZON																		
BATELEC I	10	10	10	5	5	4	5	49	10	10	5	25	14	4	4	0	22	96
BATELEC II	10	10	10	5	5	4	5	49	0	10	5	15	14	4	4	3	25	89
FLECO	10	10	10	5	5	4	5	49	0	10	5	15	14	4	4	3	25	89
QUEZELCO I	0	10	10	5	0	3	5	33	0	10	5	15	14	4	4	0	22	70
QUEZELCO II	10	10	10	5	0	3	5	43	0	10	5	15	12	4	4	3	23	81

INSTITUTIONAL PERFORMANCE ASSESSMENT REPORT

For the Month of October 2014

Electric Cooperative	Good Governance (50%)								Leadership and Management (25%)				Stakeholders (25%)					Total
	Cash Advance / Power Account Payables (10 pts.)	BOD Attendance (10 pts.)	BOD Continuing qualification (10 pts.)	Absence of verified complaint (5 pts.)	Reorganizational Structure (5 pts.)	IT Infrastructure (5 pts.)	Audit Rating (5 pts.)	Sub-total	Employee - Consumer ratio (10 pts.)	Avail. of retirement fund (10 pts.)	Sufficient no. of professional workforce (5 pts.)	Sub-total	Customer Service Standard (14 pts.)	Conduct of AGMA (4 pts.)	District Election (4 pts.)	Actions on consumer complaint (3 pts.)	Sub-total	
IV B - MIMAROPA																		
LUBELCO	10	10	10	5	5	3	5	48	10	10	0	20	14	4	4	3	25	93
OMEKO	10	10	10	5	5	5	0	45	10	10	0	20	8	4	4	3	19	84
ORMECO	10	10	10	5	5	5	5	50	10	10	5	25	14	4	4	3	25	100
MARELCO	0	10	10	5	5	5	5	40	10	10	5	25	14	4	4	10	32	97
TIELCO	10	10	10	5	0	5	5	45	10	10	0	20	14	4	4	3	25	90
ROMELCO	10	10	10	5	5	3	0	43	10	10	0	20	14	4	4	3	25	88
PALECO	0	10	0	5	0	5	5	25	10	10	5	25	12	4	4	0	20	70
BISELCO	10	10	10	5	5	3	5	48	10	10	0	20	12	4	4	3	23	91
REGION V																		
CANORECO	10	10	10	5	5	5	0	45	10	10	5	25	14	4	4	3	25	95
CASURECO I	10	10	10	5	5	5	5	50	0	10	5	15	14	4	4	0	22	87
CASURECO II	10	10	10	5	5	5	5	50	10	10	5	25	12	4	4	3	23	98
CASURECO III	NDA	NDA	NDA	5	5	2	NDA	12	10	0	NDA	10	10	4	NDA	3	17	39
CASURECO IV	0	10	10	5	5	4	0	34	10	10	5	25	12	4	4	3	23	82
ALECO	NDA							0				0					0	0
SORECO I	0	10	0	5	5	4	5	29	0	10	5	15	14	4	0	3	21	65
SORECO II	0	10	0	5	0	3	NDA	18	NDA	0	0	0	10	4	4	3	21	39
FICELCO	10	10	10	5	5	3	5	48	10	10	5	25	12	4	4	0	20	93
MASELCO	0	10	10	5	5	3	0	33	10	10	0	20	12	4	4	3	23	76
TISELCO	10	10	10	5	0	3	NDA	38	10	0	0	10	10	4	4	3	21	69

INSTITUTIONAL PERFORMANCE ASSESSMENT REPORT

For the Month of October 2014

Electric Cooperative	Good Governance (50%)								Leadership and Management (25%)				Stakeholders (25%)					Total
	Cash Advance / Power Account Payables (10 pts.)	BOD Attendance (10 pts.)	BOD Continuing qualification (10 pts.)	Absence of verified complaint (5 pts.)	Reorganizational Structure (5 pts.)	IT Infrastructure (5 pts.)	Audit Rating (5 pts.)	Sub-total	Employee - Consumer ratio (10 pts.)	Avail. of retirement fund (10 pts.)	Sufficient no. of professional workforce (5 pts.)	Sub-total	Customer Service Standard (14 pts.)	Conduct of AGMA (4 pts.)	District Election (4 pts.)	Actions on consumer complaint (3 pts.)	Sub-total	
REGION VI																		
AKELCO	10	10	10	5	5	5	0	45	10	10	5	25	14	4	4	3	25	95
ANTECO	10	10	10	5	0	5	5	45	10	10	5	25	14	4	4	3	25	95
CAPELCO	10	10	10	5	0	3	2	40	10	10	5	25	14	4	4	3	25	90
ILECO I	10	10	10	5	5	5	5	50	10	10	5	25	14	4	4	3	25	100
ILECO II	10	10	10	5	5	5	5	50	10	10	5	25	14	4	4	3	25	100
ILECO III	0	10	10	5	5	5	5	40	10	10	5	25	14	4	4	3	25	90
GUIMELCO	10	10	10	5	5	5	5	50	10	10	5	25	12	4	4	3	23	98
NONECO	0	10	10	5	5	4	2	36	10	10	5	25	14	4	4	3	25	86
CENECO	10	10	10	5	5	4	5	49	10	10	5	25	14	4	4	3	25	99
NOCECO	10	10	0	5	0	5	NDA	30	10	10	5	25	14	4	4	3	25	80
REGION VII																		
NORECO I	10	10	10	5	5	4	5	49	10	10	5	25	14	4	4	3	25	99
NORECO II	0	10	0	5	0	4	0	19	0	10	5	15	12	4	4	3	23	57
BANELCO	10	10	10	5	5	3	5	48	10	10	0	20	14	4	4	3	25	93
CEBECO I	10	10	10	5	5	5	5	50	10	10	5	25	14	4	4	3	25	100
CEBECO II	10	10	10	5	5	5	5	50	10	10	5	25	14	4	4	3	25	100
CEBECO III	10	10	10	5	5	5	5	50	10	10	5	25	14	4	4	3	25	100
PROSIELCO	10	10	10	5	5	5	5	50	10	10	0	20	12	4	4	3	23	93
CELCO	10	10	10	5	0	3	0	38	10	10	0	20	14	4	4	3	25	83
BOHECO I	10	10	10	5	5	4	5	49	10	10	5	25	14	4	4	3	25	99
BOHECO II	10	10	10	5	5	3	5	48	10	10	5	25	14	4	4	0	22	95

INSTITUTIONAL PERFORMANCE ASSESSMENT REPORT

For the Month of October 2014

Electric Cooperative	Good Governance (50%)								Leadership and Management (25%)				Stakeholders (25%)				Total	
	Cash Advance / Power Account Payables (10 pts.)	BOD Attendance (10 pts.)	BOD Continuing qualification (10 pts.)	Absence of verified complaint (5 pts.)	Reorganizational Structure (5 pts.)	IT Infrastructure (5 pts.)	Audit Rating (5 pts.)	Sub-total	Employee - Consumer ratio (10 pts.)	Avail. of retirement fund (10 pts.)	Sufficient no. of professional workforce (5 pts.)	Sub-total	Customer Service Standard (14 pts.)	Conduct of AGMA (4 pts.)	District Election (4 pts.)	Actions on consumer complaint (3 pts.)		Sub-total
REGION VIII																		
DORELCO	NO MIR	NO MIR	NDA	5	0	NO PSMR	NDA	5	NO PSMR	NO PSMR	NO MIR	0	NO PSMR	4	NDA	NO MIR	4	9
LEYECO II	0	10	10	5	5	5	5	40	10	10	5	25	14	4	4	3	25	90
LEYECO III	10	10	10	5	5	3	2	45	10	10	5	25	14	4	4	3	25	95
LEYECO IV	10	10	10	5	5	5	0	45	10	10	5	25	12	4	4	3	23	93
LEYECO V	0	10	10	5	0	5	5	35	10	10	5	25	12	4	4	0	20	80
SOLECO	10	10	10	5	5	5	5	50	10	10	5	25	12	4	4	3	23	98
BILECO	10	10	10	5	5	4	5	49	10	10	5	25	14	4	4	3	25	99
NORSAMELCO	10	10	10	5	5	4	0	44	10	0	0	10	12	NDA	4	3	19	73
SAMELCO I	10	10	10	5	0	5	0	40	10	10	5	25	14	4	4	3	25	90
SAMELCO II	10	10	10	5	5	5	5	50	10	10	5	25	14	4	4	3	25	100
ESAMELCO	10	10	10	5	5	3	5	48	10	10	5	25	14	4	4	3	25	98
REGION IX (ZAMBOANGA PENINSULA)																		
ZANECO	0	10	10	5	5	3	2	35	0	10	5	15	14	4	4	3	25	75
ZAMSURECO I	10	10	10	5	5	5	5	50	10	10	0	20	14	4	4	3	25	95
ZAMSURECO II	0	0	10	5	0	4	0	19	10	10	0	20	12	4	4	3	23	62
ZAMCELCO	10	10	10	5	5	4	5	49	0	10	5	15	8	4	4	0	16	80

INSTITUTIONAL PERFORMANCE ASSESSMENT REPORT

For the Month of October 2014

Electric Cooperative	Good Governance (50%)								Leadership and Management (25%)				Stakeholders (25%)				Total	
	Cash Advance / Power Account Payables (10 pts.)	BOD Attendance (10 pts.)	BOD Continuing qualification (10 pts.)	Absence of verified complaint (5 pts.)	Reorganizational Structure (5 pts.)	IT Infrastructure (5 pts.)	Audit Rating (5 pts.)	Sub-total	Employee - Consumer ratio (10 pts.)	Avail. of retirement fund (10 pts.)	Sufficient no. of professional workforce (5 pts.)	Sub-total	Customer Service Standard (14 pts.)	Conduct of AGMA (4 pts.)	District Election (4 pts.)	Actions on consumer complaint (3 pts.)		Sub-total
REGION X																		
MOELCI I	0	10	0	5	0	4	0	19	0	10	5	15	14	4	0	0	18	52
MOELCI II	0	10	10	5	5	2	5	37	10	10	5	25	14	4	4	3	25	87
MORESCO I	10	10	10	5	5	5	2	47	10	10	5	25	14	4	4	3	25	97
MORESCO II	10	10	10	5	5	5	2	47	10	10	5	25	14	4	4	3	25	97
FIBECO	10	10	0	5	5	5	0	35	10	10	5	25	14	4	0	3	21	81
BUSECO	10	10	10	5	5	5	5	50	10	10	5	25	14	4	4	3	25	100
CAMELCO	10	10	10	5	5	4	5	49	10	10	0	20	14	4	4	3	25	94
LANECO	0	10	0	5	5	5	0	25	10	10	5	25	14	4	0	3	21	71
REGION XI (DAVAO REGION)																		
DORECO	10	10	10	5	5	4	5	49	10	10	5	25	14	4	4	3	25	99
DANECO	0	10	10	5	5	4	2	36	10	10	5	25	14	4	4	0	22	83
DASURECO	10	10	10	5	5	4	5	49	10	10	5	25	14	4	4	3	25	99
REGION XII (SOCCSARGEN REGION)																		
COTELCO	0	10	10	5	5	5	5	40	10	10	5	25	14	4	4	3	25	90
COTELCO PPALMA	10	10	10	5	5	4	2	46	10	10	5	25	12	4	4	3	23	94
SOCOTECO I	10	10	10	5	5	5	5	50	10	10	5	25	14	4	4	3	25	100
SOCOTECO II	10	10	10	5	5	5	5	50	10	10	5	25	14	4	4	3	25	100
SUKELCO	10	10	10	5	5	5	5	50	10	10	5	25	10	4	4	0	18	93

INSTITUTIONAL PERFORMANCE ASSESSMENT REPORT

For the Month of October 2014

Electric Cooperative	Good Governance (50%)								Leadership and Management (25%)				Stakeholders (25%)					Total
	Cash Advance / Power Account Payables (10 pts.)	BOD Attendance (10 pts.)	BOD Continuing qualification (10 pts.)	Absence of verified complaint (5 pts.)	Reorganizational Structure (5 pts.)	IT Infrastructure (5 pts.)	Audit Rating (5 pts.)	Sub-total	Employee - Consumer ratio (10 pts.)	Avail. of retirement fund (10 pts.)	Sufficient no. of professional workforce (5 pts.)	Sub-total	Customer Service Standard (14 pts.)	Conduct of AGMA (4 pts.)	District Election (4 pts.)	Actions on consumer complaint (3 pts.)	Sub-total	
ARMM																		
TAWELCO	0	10	10	5	0	NDA	NDA	25	10	NDA	0	10	NO PSMR	NDA	4	3	7	42
SIASELCO	10	10	NDA	5	0	2	2	29	NDA	10	0	10	12	NDA	4	NDA	16	55
SULECO	10	10	10	5	5	3	2	45	10	10	0	20	12	NDA	4	3	19	84
BASELCO	0	10	10	5	5	1	0	31	0	0	0	0	10	4	4	3	21	52
CASELCO	NDA							0				0					0	0
LASURECO	NDA							0				0					0	0
MAGELCO	NDA							0				0					0	0
CARAGA																		
ANECO	10	10	10	5	5	5	5	50	10	10	5	25	14	4	4	3	25	100
ASELCO	10	10	10	5	5	5	5	50	10	10	5	25	14	4	4	3	25	100
SURNECO	10	10	10	5	5	5	5	50	10	10	5	25	14	4	4	3	25	100
SIARELCO	10	10	10	5	5	5	5	50	10	10	0	20	14	4	4	3	25	95
DIELCO	10	10	10	5	5	5	5	50	10	10	0	20	14	4	4	3	25	95
SURSECO I	10	10	10	5	5	5	5	50	10	10	5	25	14	4	4	3	25	100
SURSECO II	10	10	10	5	5	5	5	50	10	10	5	25	14	4	4	3	25	100

INSTITUTIONAL PERFORMANCE ASSESSMENT REPORT

For the Month of November 2014

Electric Cooperative	Good Governance (50%)								Leadership and Management (25%)				Stakeholders (25%)				Total	
	Cash Advance / Power Account Payables (10 pts.)	BOD Attendance (10 pts.)	BOD Continuing qualification (10 pts.)	Absence of verified complaint (5 pts.)	Reorganizational Structure (5 pts.)	IT Infrastructure (5 pts.)	Audit Rating (5 pts.)	Sub-total	Employee - Consumer ratio (10 pts.)	Avail. of retirement fund (10 pts.)	Sufficient no. of professional workforce (5 pts.)	Sub-total	Customer Service Standard (14 pts.)	Conduct of AGMA (4 pts.)	District Election (4 pts.)	Actions or consumer complaint (3 pts.)		Sub-total
REGION I																		
INEC	10	10	10	5	5	5	5	40	10	10	5	25	14	4	4	3	25	100
ISECO	10	10	10	5	5	4	5	49	10	10	5	25	14	4	4	3	25	99
LUELCO	10	10	10	5	0	5	5	45	10	10	5	25	14	4	4	3	25	95
PANELCO I	10	10	0	5	0	4	5	34	10	10	5	25	14	4	4	3	25	84
PANELCO III	0	10	0	5	0	3	NDA	18	10	10	5	25	14	4	4	3	25	68
CENPELCO	0	0	10	5	0	2	0	17	10	0	5	15	14	4	4	3	25	57
REGION II																		
BATANELCO	10	10	10	5	5	3	5	48	10	10	0	20	14	4	4	3	25	93
CAGELCO I	0	10	10	5	5	5	5	40	10	10	5	25	14	4	4	3	25	90
CAGELCO II	0	10	10	5	5	5	5	40	10	10	5	25	14	4	4	3	25	90
ISELCO I	0	10	10	5	5	4	5	39	10	10	5	25	14	4	4	3	25	89
ISELCO II	10	10	0	5	0	2	NDA	27	0	10	0	10	8	4	4	0	16	53
NUVELCO	NDA							0				0					0	0
QUIRELCO	10	10	10	5	0	3	NDA	38	0	10	5	15	12	4	4	3	23	76
CAR																		
BENECO	10	10	10	5	5	5	5	50	10	10	5	25	14	4	4	3	25	100
IFELCO	10	10	10	5	5	5	5	50	0	10	0	10	14	4	4	3	25	85
Kaelco	10	10	10	5	5	2	2	44	0	10	5	15	14	4	4	3	25	84
ABRECO	NDA							0				0					0	0
MOPRECO	10	10	10	5	5	4	5	49	10	10	0	20	14	4	4	0	22	91

INSTITUTIONAL PERFORMANCE ASSESSMENT REPORT

For the Month of November 2014

Electric Cooperative	Good Governance (50%)								Leadership and Management (25%)				Stakeholders (25%)					Total
	Cash Advance / Power Account Payables (10 pts.)	BOD Attendance (10 pts.)	BOD Continuing qualification (10 pts.)	Absence of verified complaint (5 pts.)	Reorganizational Structure (5 pts.)	IT Infrastructure (5 pts.)	Audit Rating (5 pts.)	Sub-total	Employee - Consumer ratio (10 pts.)	Avail. of retirement fund (10 pts.)	Sufficient no. of professional workforce (5 pts.)	Sub-total	Customer Service Standard (14 pts.)	Conduct of AGMA (4 pts.)	District Election (4 pts.)	Actions on consumer complaint (3 pts.)	Sub-total	
REGION III																		
AURELCO	10	10	10	5	5	2	5	47	0	10	0	10	14	4	4	3	25	82
TARELCO I	10	10	10	5	5	5	5	50	10	10	5	25	14	4	4	3	25	100
TARELCO II	10	10	10	5	5	5	5	50	10	10	5	25	14	4	4	3	25	100
NEECO I	10	10	10	5	5	5	0	45	10	10	5	25	14	4	4	3	25	95
NEECO II - AREA I	10	10	10	5	5	5	5	50	10	10	5	25	14	4	4	3	25	100
NEECO II - AREA II	10	10	10	5	5	5	5	50	10	10	5	25	12	4	4	3	23	98
SAJELCO	NDA	NDA	10	5	0	2	0	17	0	10	5	15	8	4	4	0	16	48
PRESCO	10	10	10	5	0	5	5	45	0	10	0	10	14	4	4	3	25	80
PELCO I	10	10	10	5	5	5	5	50	10	10	5	25	14	4	4	3	25	100
PELCO II	0	10	0	5	0	5	5	25	0	0	5	5	8	4	4	3	19	49
PELCO III	10	NDA	10	5	5	3	0	33	0	0	5	5	12	4	4	NDA	20	58
PENELCO	0	10	10	5	5	5	5	40	10	10	5	25	14	4	4	3	25	90
ZAMECO I	10	10	10	5	5	3	5	48	10	10	5	25	14	4	4	3	25	98
ZAMECO II	10	10	10	5	5	4	5	49	10	10	5	25	14	4	4	0	22	96
REGION IVA/VB																		
IV A - CALABARZON																		
BATELEC I	10	10	10	5	5	4	5	49	10	10	5	25	14	4	4	0	22	96
BATELEC II	10	10	10	5	5	4	5	49	0	10	5	15	14	4	4	3	25	89
FLECO	10	10	10	5	5	4	5	49	0	10	5	15	14	4	4	3	25	89
QUEZELCO I	0	10	10	5	0	3	5	33	0	10	5	15	14	4	4	0	22	70
QUEZELCO II	10	10	10	5	0	3	5	43	0	10	5	15	12	4	4	3	23	81

INSTITUTIONAL PERFORMANCE ASSESSMENT REPORT

For the Month of November 2014

Electric Cooperative	Good Governance (50%)								Leadership and Management (25%)				Stakeholders (25%)				Total	
	Cash Advance / Power Account Payables (10 pts.)	BOD Attendance (10 pts.)	BOD Continuing qualification (10 pts.)	Absence of verified complaint (5 pts.)	Reorganizational Structure (5 pts.)	IT Infrastructure (5 pts.)	Audit Rating (5 pts.)	Sub-total	Employee - Consumer ratio (10 pts.)	Avail. of retirement fund (10 pts.)	Sufficient no. of professional workforce (5 pts.)	Sub-total	Customer Service Standard (14 pts.)	Conduct of AGMA (4 pts.)	District Election (4 pts.)	Actions on consumer complaint (3 pts.)		Sub-total
IV B - MIMAROPA																		
LUBELCO	10	10	10	5	5	3	5	48	10	10	0	20	14	4	4	3	25	93
OMEKO	10	10	10	5	5	5	0	45	10	10	0	20	8	4	4	3	19	84
ORMECO	10	10	10	5	5	5	5	50	10	10	5	25	14	4	4	3	25	100
MARELCO	10	10	10	5	5	5	5	50	10	10	5	25	14	4	4	3	25	100
TIELCO	10	10	10	5	0	5	5	45	10	10	0	20	14	4	4	3	25	90
ROMELCO	10	10	10	5	5	3	0	43	10	10	0	20	14	4	4	3	25	88
PALECO	0	10	0	5	0	5	5	25	10	10	5	25	12	4	4	3	23	73
BISELCO	10	10	10	5	5	3	5	48	10	10	0	20	12	4	4	3	23	91
REGION V																		
CANORECO	10	10	10	5	5	5	0	45	10	10	5	25	14	4	4	3	25	95
CASURECO I	0	10	10	5	5	5	5	40	0	10	5	15	14	4	4	0	22	77
CASURECO II	10	10	10	5	5	5	5	50	10	10	5	25	12	4	4	3	23	98
CASURECO III	NO MIR	NO MIR	NDA	5	5	2	NDA	12	10	0	NO MIR	10	10	4	0	3	17	39
CASURECO IV	0	10	10	5	5	4	0	34	10	10	5	25	12	4	4	3	23	82
ALECO	NDA							0				0					0	0
SORECO I	10	10	0	5	5	4	5	39	10	10	5	25	14	4	0	3	21	85
SORECO II	10	10	10	5	0	3	NDA	38	NO PSMR	0	0	0	12	4	4	3	23	61
FICELCO	10	10	10	5	5	3	5	48	10	10	5	25	12	4	4	0	20	93
MASELCO	0	10	10	5	5	3	0	33	10	10	5	25	12	4	4	3	23	81
TISELCO	10	10	10	5	0	3	NDA	38	10	0	0	10	10	4	4	3	21	69

INSTITUTIONAL PERFORMANCE ASSESSMENT REPORT

For the Month of November 2014

Electric Cooperative	Good Governance (50%)								Leadership and Management (25%)				Stakeholders (25%)					Total
	Cash Advance / Power Account Payables (10 pts.)	BOD Attendance (10 pts.)	BOD Continuing qualification (10 pts.)	Absence of verified complaint (5 pts.)	Reorganizational Structure (5 pts.)	IT Infrastructure (5 pts.)	Audit Rating (5 pts.)	Sub-total	Employee - Consumer ratio (10 pts.)	Avail. of retirement fund (10 pts.)	Sufficient no. of professional workforce (5 pts.)	Sub-total	Customer Service Standard (14 pts.)	Conduct of AGMA (4 pts.)	District Election (4 pts.)	Actions on consumer complaint (3 pts.)	Sub-total	
REGION VI																		
AKELCO	10	10	10	5	5	5	0	45	10	10	5	25	14	4	4	3	25	95
ANTECO	10	10	10	5	0	5	5	45	10	10	5	25	14	4	4	3	25	95
CAPELCO	10	10	10	5	0	3	2	40	10	10	5	25	14	4	4	3	25	90
ILECO I	10	10	10	5	5	5	5	50	10	10	5	25	14	4	4	3	25	100
ILECO II	10	10	10	5	5	5	5	50	10	10	5	25	14	4	4	3	25	100
ILECO III	0	10	10	5	5	5	5	40	10	10	5	25	14	4	4	3	25	90
GUIMELCO	10	10	10	5	5	5	5	50	10	10	5	25	12	4	4	3	23	98
NONECO	0	10	10	5	5	4	2	36	10	10	5	25	14	4	4	3	25	86
CENECO	10	10	10	5	5	4	5	49	10	10	5	25	14	4	4	3	25	99
NOCECO	10	10	0	5	0	5	NDA	30	10	10	5	25	14	4	4	3	25	80
REGION VII																		
NORECO I	10	10	10	5	5	4	5	49	10	10	5	25	14	4	4	3	25	99
NORECO II	0	10	0	5	0	4	0	19	0	10	5	15	12	4	4	3	23	57
BANELCO	10	10	4	5	5	3	5	42	10	10	0	20	14	4	4	3	25	87
CEBECO I	10	10	10	5	5	5	5	50	10	10	5	25	14	4	4	0	22	97
CEBECO II	10	10	10	5	5	5	5	50	10	10	5	25	14	4	4	3	25	100
CEBECO III	10	10	10	5	5	5	5	50	10	10	5	25	14	4	4	3	25	100
PROSIELCO	10	10	10	5	5	5	5	50	10	10	0	20	12	4	4	3	23	93
CELCO	10	10	10	5	0	3	0	38	10	10	0	20	14	4	4	3	25	83
BOHECO I	10	10	10	5	5	4	5	49	10	10	5	25	14	4	4	0	22	96
BOHECO II	10	10	10	5	5	3	5	48	10	10	5	25	14	4	4	3	25	98

INSTITUTIONAL PERFORMANCE ASSESSMENT REPORT

For the Month of November 2014

Electric Cooperative	Good Governance (50%)								Leadership and Management (25%)				Stakeholders (25%)					Total
	Cash Advance / Power Account Payables (10 pts.)	BOD Attendance (10 pts.)	BOD Continuing qualification (10 pts.)	Absence of verified complaint (5 pts.)	Reorganizational Structure (5 pts.)	IT Infrastructure (5 pts.)	Audit Rating (5 pts.)	Sub-total	Employee - Consumer ratio (10 pts.)	Avail. of retirement fund (10 pts.)	Sufficient no. of professional workforce (5 pts.)	Sub-total	Customer Service Standard (14 pts.)	Conduct of AGMA (4 pts.)	District Election (4 pts.)	Actions on consumer complaint (3 pts.)	Sub-total	
REGION VIII																		
DORELCO	NO MIR	NO MIR	NDA	5	0	NO PSMR	NDA	5	NO PSMR	NO PSMR	NO MIR	0	NO PSMR	NDA	NDA	NO MIR	0	5
LEYECO II	10	10	10	5	5	5	5	50	10	10	5	25	14	4	4	3	25	100
LEYECO III	10	10	10	5	5	3	2	45	10	10	5	25	14	4	4	3	25	95
LEYECO IV	10	10	10	5	5	5	0	45	10	10	5	25	12	4	4	3	23	93
LEYECO V	0	10	10	5	0	5	5	35	10	10	5	25	14	4	4	0	22	82
SOLECO	10	10	10	5	5	5	5	50	10	10	5	25	14	4	4	3	25	100
BILECO	10	10	10	5	5	4	5	49	10	10	5	25	14	4	4	3	25	99
NORSAMELCO	10	10	10	5	5	4	0	44	10	0	0	10	12	NDA	4	NO MIR	16	70
SAMELCO I	10	10	10	5	0	5	0	40	10	10	5	25	14	4	4	3	25	90
SAMELCO II	10	10	10	5	5	5	5	50	10	10	5	25	14	4	4	3	25	100
ESAMELCO	10	10	10	5	5	3	5	48	10	10	5	25	14	4	4	3	25	98
REGION IX (ZAMBOANGA PENINSULA)																		
ZANECO	0	10	10	5	5	3	2	35	0	10	5	15	14	4	4	3	25	75
ZAMSURECO I	10	10	10	5	5	5	5	50	10	10	0	20	14	4	4	3	25	95
ZAMSURECO II	0	0	10	5	0	4	0	19	10	10	0	20	12	4	4	3	23	62
ZAMCELCO	10	10	10	5	5	4	5	49	0	10	5	15	8	4	4	3	19	83

INSTITUTIONAL PERFORMANCE ASSESSMENT REPORT

For the Month of November 2014

Electric Cooperative	Good Governance (50%)								Leadership and Management (25%)				Stakeholders (25%)				Total	
	Cash Advance / Power Account Payables (10 pts.)	BOD Attendance (10 pts.)	BOD Continuing qualification (10 pts.)	Absence of verified complaint (5 pts.)	Reorganizational Structure (5 pts.)	IT Infrastructure (5 pts.)	Audit Rating (5 pts.)	Sub-total	Employee - Consumer ratio (10 pts.)	Avail. of retirement fund (10 pts.)	Sufficient no. of professional workforce (5 pts.)	Sub-total	Customer Service Standard (14 pts.)	Conduct of AGMA (4 pts.)	District Election (4 pts.)	Actions on consumer complaint (3 pts.)		Sub-total
REGION X																		
MOELCI I	0	10	0	5	0	4	0	19	0	10	5	15	14	4	0	0	18	52
MOELCI II	0	10	10	5	5	2	5	37	10	10	5	25	14	4	4	3	25	87
MORESCO I	10	10	10	5	5	5	2	47	10	10	5	25	14	4	4	3	25	97
MORESCO II	10	10	10	5	5	5	2	47	10	10	5	25	14	4	4	3	25	97
FIBECO	10	10	0	5	5	5	0	35	10	10	5	25	14	4	0	3	21	81
BUSECO	10	10	10	5	5	5	5	50	10	10	5	25	14	4	4	3	25	100
CAMELCO	0	10	10	5	5	4	5	39	10	10	0	20	14	4	4	3	25	84
LANECO	0	10	0	5	5	5	0	25	10	10	5	25	14	4	0	3	21	71
REGION XI (DAVAO REGION)																		
DORECO	10	10	10	5	5	4	5	49	10	10	5	25	14	4	4	3	25	99
DANECO	0	10	10	5	5	4	2	36	10	10	5	25	14	4	4	0	22	83
DASURECO	0	10	10	5	5	4	5	39	10	10	5	25	14	4	4	3	25	89
REGION XII (SOCCSARGEN REGION)																		
COTELCO	0	10	10	5	5	5	5	40	10	10	5	25	14	4	4	3	25	90
COTELCO PPALMA	10	10	10	5	5	4	2	46	10	10	5	25	12	4	4	3	23	94
SOCOTECO I	10	10	10	5	5	5	5	50	10	10	5	25	14	4	4	3	25	100
SOCOTECO II	10	10	10	5	5	5	5	50	10	10	5	25	14	4	4	3	25	100
SUKELCO	10	10	10	5	5	5	5	50	10	10	5	25	10	4	4	0	18	93

INSTITUTIONAL PERFORMANCE ASSESSMENT REPORT

For the Month of November 2014

Electric Cooperative	Good Governance (50%)								Leadership and Management (25%)				Stakeholders (25%)				Total	
	Cash Advance / Power Account Payables (10 pts.)	BOD Attendance (10 pts.)	BOD Continuing qualification (10 pts.)	Absence of verified complaint (5 pts.)	Reorganizational Structure (5 pts.)	IT Infrastructure (5 pts.)	Audit Rating (5 pts.)	Sub-total	Employee - Consumer ratio (10 pts.)	Avail. of retirement fund (10 pts.)	Sufficient no. of professional workforce (5 pts.)	Sub-total	Customer Service Standard (14 pts.)	Conduct of AGMA (4 pts.)	District Election (4 pts.)	Actions on consumer complaint (3 pts.)		Sub-total
ARMM																		
TAWELCO	NO MIR	NO MIR	10	5	0	NDA	NDA	15	NO PSMR	NDA	NO MIR	0	NO PSMR	NDA	4	NO MIR	4	19
SIASELCO	10	10	NDA	5	0	2	2	29	NDA	10	0	10	12	NDA	4	NDA	16	55
SULECO	10	10	10	5	5	3	2	45	10	10	0	20	10	NDA	4	3	17	82
BASELCO	0	10	10	5	5	1	0	31	0	0	0	0	10	4	4	3	21	52
CASELCO	NDA							0				0					0	0
LASURECO	NDA							0				0					0	0
MAGELCO	NDA							0				0					0	0
CARAGA																		
ANECO	10	10	10	5	5	5	5	50	10	10	5	25	14	4	4	3	25	100
ASELCO	10	10	10	5	5	5	5	50	10	10	5	25	14	4	4	3	25	100
SURNECO	10	10	10	5	5	5	5	50	10	10	5	25	14	4	4	3	25	100
SIARELCO	10	10	10	5	5	5	5	50	10	10	0	20	14	4	4	3	25	95
DIELCO	10	10	10	5	5	5	5	50	10	10	0	20	14	4	4	3	25	95
SURSECO I	10	10	10	5	5	5	5	50	10	10	5	25	14	4	4	3	25	100
SURSECO II	10	10	10	5	5	5	5	50	10	10	5	25	14	4	4	3	25	100

INSTITUTIONAL PERFORMANCE ASSESSMENT REPORT

For the Month of December 2014

Electric Cooperative	Good Governance (50%)								Leadership and Management (25%)				Stakeholders (25%)					Total
	Cash Advance / Power Account Payables (10 pts.)	BOD Attendance (10 pts.)	BOD Continuing qualification (10 pts.)	Absence of verified complaint (5 pts.)	Reorganizational Structure (5 pts.)	IT Infrastructure (5 pts.)	Audit Rating (5 pts.)	Sub-total	Employee - Consumer ratio (10 pts.)	Avail. of retirement fund (10 pts.)	Sufficient no. of professional workforce (5 pts.)	Sub-total	Customer Service Standard (14 pts.)	Conduct of AGMA (4 pts.)	District Election (4 pts.)	Actions or consumer complaint (3 pts.)	Sub-total	
REGION I																		
INEC	0	10	10	5	5	5	5	30	10	10	5	25	14	4	4	3	25	90
ISECO	10	10	10	5	5	4	5	49	10	10	5	25	14	4	4	3	25	99
LUELCO	10	10	10	5	0	5	5	45	10	10	5	25	14	4	4	3	25	95
PANELCO I	10	10	0	5	0	4	5	34	10	10	5	25	14	4	4	3	25	84
PANELCO III	0	10	0	5	0	3	NDA	18	10	10	5	25	14	4	4	3	25	68
CENPELCO	0	10	10	5	0	2	0	27	10	0	5	15	14	4	4	3	25	67
REGION II																		
BATANELCO	10	10	10	5	5	3	5	48	10	10	0	20	14	4	4	3	25	93
CAGELCO I	10	10	10	5	5	5	5	50	10	10	5	25	14	4	4	3	25	100
CAGELCO II	10	10	10	5	5	5	5	50	10	10	5	25	14	4	4	3	25	100
ISELCO I	0	10	10	5	5	4	5	39	10	10	5	25	14	4	4	3	25	89
ISELCO II	10	10	0	5	0	2	NDA	27	0	10	0	10	8	4	4	3	19	56
NUVELCO	NDA							0				0					0	0
QUIRELCO	10	10	10	5	0	3	NDA	38	0	10	5	15	12	4	4	3	23	76
CAR																		
BENECO	10	10	10	5	5	5	5	50	10	10	5	25	14	4	4	3	25	100
IFELCO	10	10	10	5	5	5	5	50	0	10	0	10	14	4	4	3	25	85
Kaelco	10	10	10	5	5	2	2	44	0	10	5	15	14	4	4	3	25	84
ABRECO	NDA							0				0					0	0
MOPRECO	10	10	10	5	5	4	5	49	10	10	0	20	14	4	4	0	22	91

INSTITUTIONAL PERFORMANCE ASSESSMENT REPORT

For the Month of December 2014

Electric Cooperative	Good Governance (50%)								Leadership and Management (25%)				Stakeholders (25%)					Total
	Cash Advance / Power Account Payables (10 pts.)	BOD Attendance (10 pts.)	BOD Continuing qualification (10 pts.)	Absence of verified complaint (5 pts.)	Reorganizational Structure (5 pts.)	IT Infrastructure (5 pts.)	Audit Rating (5 pts.)	Sub-total	Employee - Consumer ratio (10 pts.)	Avail. of retirement fund (10 pts.)	Sufficient no. of professional workforce (5 pts.)	Sub-total	Customer Service Standard (14 pts.)	Conduct of AGMA (4 pts.)	District Election (4 pts.)	Actions on consumer complaint (3 pts.)	Sub-total	
REGION III																		
AURELCO	10	10	10	5	5	2	5	47	0	10	0	10	14	4	4	3	25	82
TARELCO I	10	10	10	5	5	5	5	50	10	10	5	25	14	4	4	3	25	100
TARELCO II	10	10	10	5	5	5	5	50	10	10	5	25	14	4	4	3	25	100
NEECO I	10	10	10	5	5	5	0	45	10	10	5	25	14	4	4	3	25	95
NEECO II - AREA I	10	10	10	5	5	5	5	50	10	10	5	25	14	4	4	3	25	100
NEECO II - AREA II	10	10	10	5	5	5	5	50	10	10	5	25	12	4	4	3	23	98
SAJELCO	10	10	10	5	0	2	0	37	0	10	5	15	8	4	4	0	16	68
PRESCO	10	10	10	5	0	5	5	45	0	10	0	10	14	4	4	3	25	80
PELCO I	10	10	10	5	5	5	5	50	10	10	5	25	14	4	4	3	25	100
PELCO II	0	10	0	5	0	5	5	25	0	0	5	5	10	4	4	3	21	51
PELCO III	10	NDA	10	5	5	3	0	33	0	0	5	5	NO PSMR	4	4	NDA	8	46
PENELCO	0	10	10	5	5	5	5	40	10	10	5	25	14	4	4	3	25	90
ZAMECO I	10	10	10	5	5	3	5	48	10	10	5	25	14	4	4	3	25	98
ZAMECO II	10	10		5	5	4	5	39	10	10	5	25	14	4	4	0	22	86
REGION IVA/IVB																		
IV A - CALABARZON																		
BATELEC I	10	10	10	5	5	4	5	49	10	10	5	25	14	4	4	0	22	96
BATELEC II	10	10	10	5	5	4	5	49	0	10	5	15	14	4	4	3	25	89
FLECO	10	10	10	5	5	4	5	49	0	10	5	15	14	4	4	3	25	89
QUEZELCO I	0	10	10	5	0	3	5	33	0	10	5	15	14	4	4	0	22	70
QUEZELCO II	10	10	10	5	0	3	5	43	0	10	5	15	12	4	4	3	23	81

INSTITUTIONAL PERFORMANCE ASSESSMENT REPORT

For the Month of December 2014

Electric Cooperative	Good Governance (50%)								Leadership and Management (25%)				Stakeholders (25%)				Total	
	Cash Advance / Power Account Payables (10 pts.)	BOD Attendance (10 pts.)	BOD Continuing qualification (10 pts.)	Absence of verified complaint (5 pts.)	Reorganizational Structure (5 pts.)	IT Infrastructure (5 pts.)	Audit Rating (5 pts.)	Sub-total	Employee - Consumer ratio (10 pts.)	Avail. of retirement fund (10 pts.)	Sufficient no. of professional workforce (5 pts.)	Sub-total	Customer Service Standard (14 pts.)	Conduct of AGMA (4 pts.)	District Election (4 pts.)	Actions on consumer complaint (3 pts.)		Sub-total
IV B - MIMAROPA																		
LUBELCO	10	10	10	5	5	3	5	48	10	10	0	20	14	4	4	3	25	93
OMECO	10	10	10	5	5	5	0	45	10	10	0	20	8	4	4	3	19	84
ORMECO	0	10	10	5	5	5	5	40	10	10	5	25	14	4	4	3	25	90
MARELCO	10	10	10	5	5	5	5	50	10	10	5	25	14	4	4	3	25	100
TIELCO	10	10	10	5	0	5	5	45	10	10	0	20	14	4	4	3	25	90
ROMELCO	10	10	10	5	5	3	0	43	10	10	0	20	14	4	4	3	25	88
PALECO	0	10	0	5	0	5	5	25	10	10	5	25	12	4	4	3	23	73
BISELCO	10	10	10	5	5	3	5	48	10	10	0	20	12	4	4	3	23	91
REGION V																		
CANORECO	10	10	10	5	5	5	0	45	10	10	5	25	14	4	4	3	25	95
CASURECO I	10	10	10	5	5	5	5	50	0	10	5	15	14	4	4	0	22	87
CASURECO II	10	10	10	5	5	5	5	50	10	10	5	25	12	4	4	3	23	98
CASURECO III	NO MIR	NO MIR	NDA	5	5	2	NDA	12	10	0	NO MIR	10	NO PSMR	NDA	NDA	NO MIR	0	22
CASURECO IV	0	10	10	5	5	4	0	34	10	10	5	25	10	4	4	3	21	80
ALECO	NDA							0				0					0	0
SORECO I	10	10	0	5	5	4	5	39	10	10	5	25	14	4	0	3	21	85
SORECO II	10	10	10	5	0	3	NDA	38	NO PSMR	0	0	0	14	4	4	3	25	63
FICELCO	10	10	10	5	5	3	5	48	10	10	5	25	12	4	4	0	20	93
MASELCO	0	0	10	5	5	3	0	23	10	10	5	25	12	4	4	3	23	71
TISELCO	10	10	10	5	0	3	NDA	38	10	0	0	10	10	4	4	3	21	69

INSTITUTIONAL PERFORMANCE ASSESSMENT REPORT

For the Month of December 2014

Electric Cooperative	Good Governance (50%)								Leadership and Management (25%)				Stakeholders (25%)					Total
	Cash Advance / Power Account Payables (10 pts.)	BOD Attendance (10 pts.)	BOD Continuing qualification (10 pts.)	Absence of verified complaint (5 pts.)	Reorganizational Structure (5 pts.)	IT Infrastructure (5 pts.)	Audit Rating (5 pts.)	Sub-total	Employee - Consumer ratio (10 pts.)	Avail. of retirement fund (10 pts.)	Sufficient no. of professional workforce (5 pts.)	Sub-total	Customer Service Standard (14 pts.)	Conduct of AGMA (4 pts.)	District Election (4 pts.)	Actions on consumer complaint (3 pts.)	Sub-total	
REGION VI																		
AKELCO	10	10	10	5	5	5	0	45	10	10	5	25	14	4	4	3	25	95
ANTECO	10	10	10	5	0	5	5	45	10	10	5	25	14	4	4	3	25	95
CAPELCO	10	10	10	5	0	3	2	40	10	10	5	25	14	4	4	3	25	90
ILECO I	10	10	10	5	5	5	5	50	10	10	5	25	14	4	4	3	25	100
ILECO II	10	10	10	5	5	5	5	50	10	10	5	25	14	4	4	3	25	100
ILECO III	0	10	10	5	5	5	5	40	10	10	5	25	14	4	4	3	25	90
GUIMELCO	10	10	10	5	5	5	5	50	10	10	5	25	10	4	4	3	21	96
NONECO	0	10	10	5	5	4	2	36	10	10	5	25	14	4	4	3	25	86
CENECO	10	10	10	5	5	4	5	49	10	10	5	25	14	4	4	3	25	99
NOCECO	10	10	0	5	0	5	NDA	30	10	10	5	25	14	4	4	3	25	80
REGION VII																		
NORECO I	10	10	10	5	5	4	5	49	10	10	5	25	14	4	4	3	25	99
NORECO II	NO MIR	NO MIR	NDA	5	0	4	0	9	0	10	5	15	12	4	NDA	NO MIR	16	40
BANELCO	10	10	10	5	5	3	5	48	10	10	0	20	14	NDA	4	3	21	89
CEBECO I	10	10	10	5	5	5	5	50	10	10	5	25	14	4	4	3	25	100
CEBECO II	10	10	10	5	5	5	5	50	10	10	5	25	14	4	4	3	25	100
CEBECO III	10	10	10	5	5	5	5	50	10	10	5	25	14	4	4	3	25	100
PROSIELCO	10	10	10	5	5	5	5	50	10	10	0	20	14	4	4	3	25	95
CELCO	10	10	10	5	0	3	0	38	10	10	0	20	14	4	4	3	25	83
BOHECO I	10	10	10	5	5	4	5	49	10	10	5	25	14	4	4	0	22	96
BOHECO II	10	10	10	5	5	3	5	48	10	10	5	25	14	4	4	3	25	98

INSTITUTIONAL PERFORMANCE ASSESSMENT REPORT

For the Month of December 2014

Electric Cooperative	Good Governance (50%)								Leadership and Management (25%)				Stakeholders (25%)					Total
	Cash Advance / Power Account Payables (10 pts.)	BOD Attendance (10 pts.)	BOD Continuing qualification (10 pts.)	Absence of verified complaint (5 pts.)	Reorganizational Structure (5 pts.)	IT Infrastructure (5 pts.)	Audit Rating (5 pts.)	Sub-total	Employee - Consumer ratio (10 pts.)	Avail. of retirement fund (10 pts.)	Sufficient no. of professional workforce (5 pts.)	Sub-total	Customer Service Standard (14 pts.)	Conduct of AGMA (4 pts.)	District Election (4 pts.)	Actions on consumer complaint (3 pts.)	Sub-total	
REGION VIII																		
DORELCO	NO MIR	NO MIR	NDA	5	0	NO PSMR	NDA	5	NO PSMR	NO PSMR	NO MIR	0	NO PSMR	NDA	NDA	NO MIR	0	5
LEYECO II	10	10	10	5	5	5	5	50	10	10	5	25	14	4	4	3	25	100
LEYECO III	10	10	10	5	5	3	2	45	10	10	5	25	14	4	4	3	25	95
LEYECO IV	10	10	10	5	5	5	0	45	10	10	5	25	12	4	4	3	23	93
LEYECO V	0	10	10	5	0	5	5	35	10	10	5	25	12	4	4	0	20	80
SOLECO	0	10	10	5	5	5	5	40	10	10	5	25	14	4	4	3	25	90
BILECO	10	10	10	5	5	4	5	49	10	10	5	25	14	4	4	3	25	99
NORSAMELCO	10	10	10	5	5	4	0	44	10	0	0	10	10	NDA	4	NO MIR	14	68
SAMELCO I	10	10	10	5	0	5	0	40	10	10	5	25	14	4	4	3	25	90
SAMELCO II	10	10	10	5	5	5	5	50	10	10	5	25	14	4	4	3	25	100
ESAMELCO	10	10	10	5	5	3	5	48	10	10	5	25	12	4	4	3	23	96
REGION IX (ZAMBOANGA PENINSULA)																		
ZANECO	0	10	10	5	5	3	2	35	0	10	5	15	14	4	4	3	25	75
ZAMSURECO I	10	10	10	5	5	5	5	50	10	10	0	20	14	4	4	3	25	95
ZAMSURECO II	0	10	10	5	0	4	0	29	10	10	0	20	12	4	4	3	23	72
ZAMCELCO	10	10	10	5	5	4	5	49	0	10	5	15	8	4	4	0	16	80

INSTITUTIONAL PERFORMANCE ASSESSMENT REPORT

For the Month of December 2014

Electric Cooperative	Good Governance (50%)								Leadership and Management (25%)				Stakeholders (25%)				Total	
	Cash Advance / Power Account Payables (10 pts.)	BOD Attendance (10 pts.)	BOD Continuing qualification (10 pts.)	Absence of verified complaint (5 pts.)	Reorganizational Structure (5 pts.)	IT Infrastructure (5 pts.)	Audit Rating (5 pts.)	Sub-total	Employee - Consumer ratio (10 pts.)	Avail. of retirement fund (10 pts.)	Sufficient no. of professional workforce (5 pts.)	Sub-total	Customer Service Standard (14 pts.)	Conduct of AGMA (4 pts.)	District Election (4 pts.)	Actions on consumer complaint (3 pts.)		Sub-total
REGION X																		
MOELCI I	0	10	10	5	0	4	0	29	0	10	5	15	14	4	0	0	18	62
MOELCI II	0	10	10	5	5	2	5	37	10	10	5	25	14	4	4	3	25	87
MORESCO I	10	10	10	5	5	5	2	47	10	10	5	25	14	4	4	3	25	97
MORESCO II	10	10	10	5	5	5	2	47	10	10	5	25	14	4	4	3	25	97
FIBECO	10	10	0	5	5	5	0	35	10	10	5	25	14	4	0	3	21	81
BUSECO	10	10	10	5	5	5	5	50	10	10	5	25	14	4	4	3	25	100
CAMELCO	10	10	10	5	5	4	5	49	10	10	0	20	14	4	4	3	25	94
LANECO	0	10	0	5	5	5	0	25	10	10	5	25	14	4	0	3	21	71
REGION XI (DAVAO REGION)																		
DORECO	10	10	10	5	5	4	5	49	10	10	5	25	14	4	4	3	25	99
DANECO	10	10	10	5	5	4	2	46	10	10	5	25	14	4	4	0	22	93
DASURECO	0	10	10	5	5	4	5	39	10	10	5	25	14	4	4	3	25	89
REGION XII (SOCCSARGEN REGION)																		
COTELCO	0	10	10	5	5	5	5	40	10	10	5	25	14	4	4	3	25	90
COTELCO PPALMA	10	10	10	5	5	4	2	46	10	10	5	25	12	4	4	3	23	94
SOCOTECO I	10	10	10	5	5	5	5	50	10	10	5	25	14	4	4	3	25	100
SOCOTECO II	10	10	10	5	5	5	5	50	10	10	5	25	14	4	4	3	25	100
SUKELCO	10	10	10	5	5	5	5	50	10	10	5	25	8	4	4	0	16	91

INSTITUTIONAL PERFORMANCE ASSESSMENT REPORT

For the Month of December 2014

Electric Cooperative	Good Governance (50%)								Leadership and Management (25%)				Stakeholders (25%)					Total
	Cash Advance / Power Account Payables (10 pts.)	BOD Attendance (10 pts.)	BOD Continuing qualification (10 pts.)	Absence of verified complaint (5 pts.)	Reorganizational Structure (5 pts.)	IT Infrastructure (5 pts.)	Audit Rating (5 pts.)	Sub-total	Employee - Consumer ratio (10 pts.)	Avail. of retirement fund (10 pts.)	Sufficient no. of professional workforce (5 pts.)	Sub-total	Customer Service Standard (14 pts.)	Conduct of AGMA (4 pts.)	District Election (4 pts.)	Actions on consumer complaint (3 pts.)	Sub-total	
ARMM																		
TAWELCO	0	10	10	5	0	NDA	NDA	25	10	NDA	0	10	NO PSMR	NDA	4	3	7	42
SIASELCO	10	10	0	5	5	2	2	34	0	10	0	10	12	NDA	4	NDA	16	60
SULECO	10	10	10	5	5	3	2	45	10	10	0	20	12	NDA	4	3	19	84
BASELCO	0	10	10	5	5	1	0	31	0	0	0	0	10	4	4	3	21	52
CASELCO	NDA							0				0					0	0
LASURECO	NDA							0				0					0	0
MAGELCO	NDA							0				0					0	0
CARAGA																		
ANECO	10	10	10	5	5	5	5	50	10	10	5	25	14	4	4	3	25	100
ASELCO	10	10	10	5	5	5	5	50	10	10	5	25	14	4	4	3	25	100
SURNECO	10	10	10	5	5	5	5	50	10	10	5	25	14	4	4	3	25	100
SIARELCO	10	10	10	5	5	5	5	50	10	10	0	20	14	4	4	3	25	95
DIELCO	10	10	10	5	5	5	5	50	10	10	0	20	14	4	4	3	25	95
SURSECO I	10	10	10	5	5	5	5	50	10	10	5	25	14	4	4	3	25	100
SURSECO II	10	10	10	5	5	5	5	50	10	10	5	25	14	4	4	3	25	100